

## Vales Point Power Station Monthly Environmental Data Summary



LICENCE NO	761	<a href="http://www.epa.nsw.gov.au/prpocapp/">http://www.epa.nsw.gov.au/prpocapp/</a>
LICENCE HOLDER	DELTA POWER & ENERGY (VALES POINT) PTY LTD	
REPORTING PERIOD	April 2026	
ADDRESS	VALES ROAD, MANNERING PARK NSW	

### Compliance Summary

Were all licence monitoring limits complied with this month?

No

Details of any licence monitoring limit not complied with this month if applicable:

EPL Point	Air/Water/Noise/Other	Pollutant	Value Measured	Licence Limit	Date	Comments
EPA 22	Water	Copper (total)	0.006	0.005	8/04/2026	The EPA has been notified in accordance with condition R4.1 of EPL761. April Copper (dissolved) result was <0.001 mg/L.

### Monitoring Locations

The location of Environment Protection Licence monitoring points within the Vales Point Power Station premises can be found at <https://www.deltapae.com.au/operations/vales-point-power-station/environmental-licences-and-monitoring> . Click the heading "Vales Point Licence Point Locations" to open the pdf document.

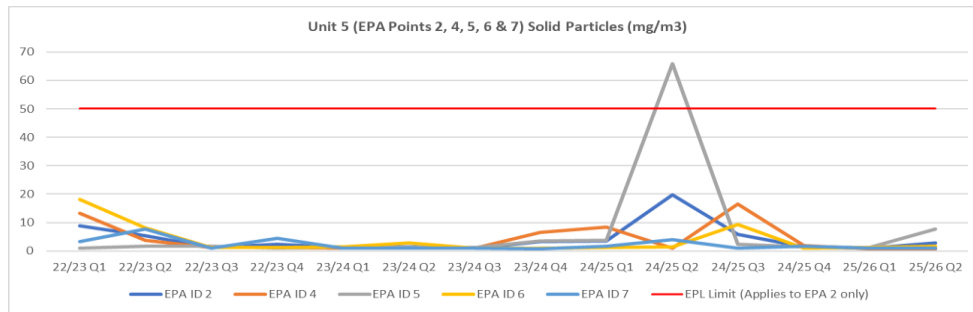
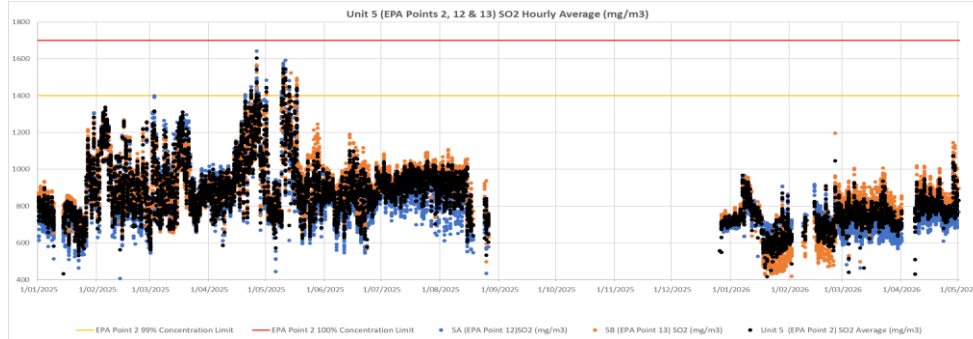
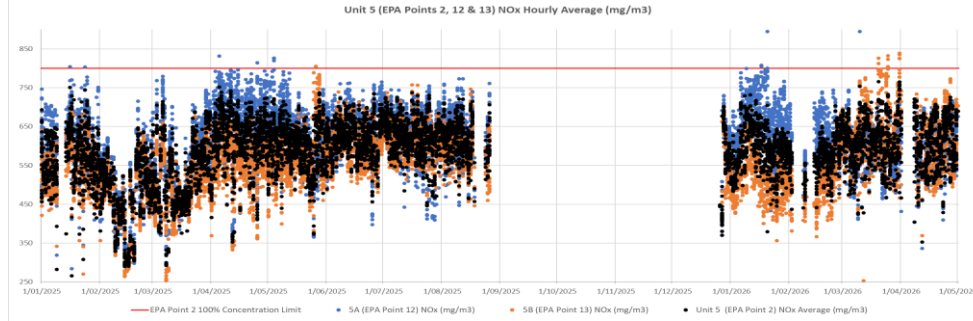
### Comments

New monitoring points and analytes have been added to the Vales Point Power Station Monthly Environmental Data Summary in accordance with the most recent version of EPL761 (issued 2/3/2026)  
 Quarterly water sampling is generally undertaken in January, April, July & October. Six monthly water sampling is generally undertaken in January and July.

**POINT 2 Combined air emissions from boiler 5 via Points 4 to 7 to Point 1 marked and shown as EPA ID 2 on The Plans "VX837351\_1\_08" AND "VX837351\_2\_03", AND PROVIDED TO THE EPA ON 23/02/2026 (EPA REFERENCE DOC26/118983).**

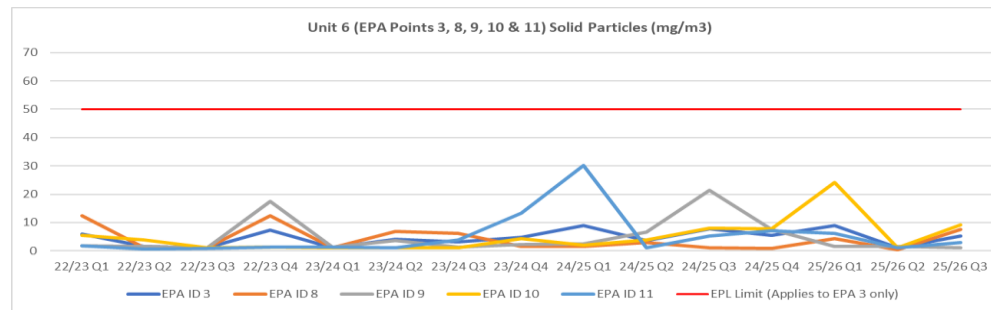
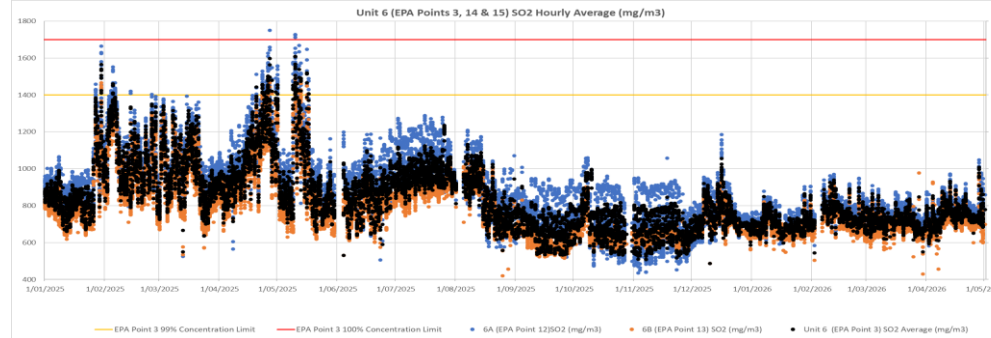
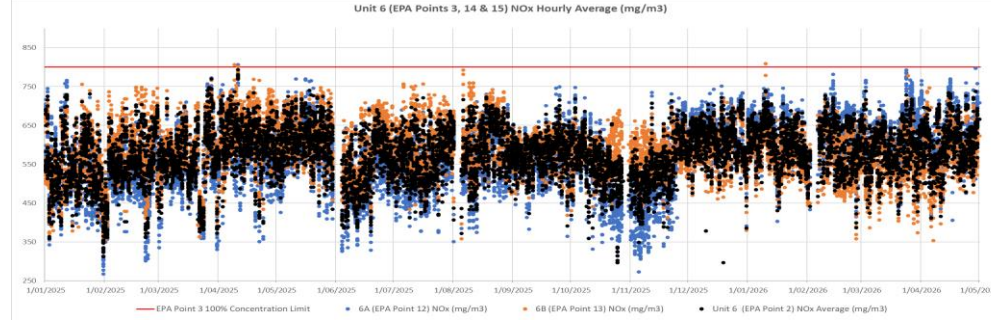
Month	Pollutant	Unit of Measure	Sample/Measurement Frequency	Samples Collected & Analysed	Date Sampled	Lowest Sample Value	Mean of Samples	Highest Sample Value	99 Percentile Concentration Limit	100 Percentile Concentration Limit	Exceed 100% Limit (yes/no)	Comments
Apr-26	Cadmium	(mg/m3)	Every 6 months	1	January 2026	0.0015	0.0015	0.0015		0.03	No	
Apr-26	Chlorine	(mg/m3)	Every 6 months	1	January 2026	0.72	0.72	0.72		4	No	
Apr-26	Fluorine	(mg/m3)	Every 6 months	1	January 2026	7.7	7.7	7.7		30	No	
Apr-26	Hydrogen chloride	(mg/m3)	Every 6 months	1	January 2026	5.7	5.7	5.7		50	No	
Apr-26	Mercury	(mg/m3)	Every 6 months	1	January 2026	0.0001	0.0001	0.0001		0.03	No	
Apr-26	Nitrogen Oxides	(mg/m3)	Continuous	96.4%	Apr-26	352	604	725		800	No	
Apr-26	Solid Particles	(mg/m3)	Quarterly	1	January 2026	<0.96	<0.96	<0.96		50	No	
Apr-26	Sulfur dioxide	(mg/m3)	Continuous	96.6%	Apr-26	678	806	1073	1400	1700	No	
Apr-26	Sulfuric acid mist and sulfur trioxide (as SO3)	(mg/m3)	Every 6 months	1	January 2026	4.0	4.0	4.0		100	No	
Apr-26	Type 1 and Type 2 substances in aggregate	(mg/m3)	Every 6 months	1	January 2026	0.07	0.07	0.07		0.6	No	
Apr-26	VOC's as n-propane equivalent	(mg/m3)	Every 6 months	1	January 2026	0.39	0.39	0.39		8	No	

The 100% Concentration limits in the below graphs apply to EPA Point 2 only. EPA Point 2 is the combined emissions from EPA Points 12 & 13 for NOx and SO2 and EPA Points 4, 5, 6 & 7 for Particulates.



POINT 3 Combined air emissions from boiler 6 via Points 8 to 11 to Point 1 marked and shown as EPA ID 3 on The Plans "VX837351_1_08" AND "VX837351_2_03", AND PROVIDED TO THE EPA ON 23/02/2026 (EPA REFERENCE DOC26/118983).												
Month	Pollutant	Unit of Measure	Sample/Measurement Frequency	Samples Collected & Analysed	Date Sampled	Lowest Sample Value	Mean of Samples	Highest Sample Value	99 Percentile Concentration Limit	100 Percentile Concentration Limit	Exceed 100% Limit (yes/no)	Comments
Apr-26	Cadmium	(mg/m3)	Every 6 months							0.03	No	
Apr-26	Chlorine	(mg/m3)	Every 6 months							4	No	
Apr-26	Fluorine	(mg/m3)	Every 6 months							30	No	
Apr-26	Hydrogen chloride	(mg/m3)	Every 6 months							50	No	
Apr-26	Mercury	(mg/m3)	Every 6 months							0.03	No	
Apr-26	Nitrogen Oxides	(mg/m3)	Continuous	98.0%	Apr-26	412	601	737		800	No	
Apr-26	Solid Particles	(mg/m3)	Quarterly	1	Feb-26	5.2	5.2	5.2		50	No	
Apr-26	Sulfur dioxide	(mg/m3)	Continuous	98.9%	Apr-26	594	753	1008	1400	1700	No	
Apr-26	Sulfuric acid mist and sulfur trioxide (as SO3)	(mg/m3)	Every 6 months							100	No	
Apr-26	Type 1 and Type 2 substances in aggregate	(mg/m3)	Every 6 months							0.6	No	
Apr-26	VOC's as n-propane equivalent	(mg/m3)	Every 6 months							8	No	

The 100% Concentration limits in the below graphs apply to EPA Point 3 only. EPA Point 3 is the combined Emissions from EPA Points 14 & 15 for NOx and SO2 and EPA Points 8, 9, 10 & 11 for Particulates.



**POINT 4** Boiler number 5 exhaust - duct A marked and shown as EPA ID 4 on The Plans "VX837351\_1\_08" AND "VX837351\_2\_03", AND PROVIDED TO THE EPA ON 23/02/2026 (EPA REFERENCE DOC26/118983).

Month	Pollutant	Unit of Measure	Sample/Measurement Frequency	Samples Collected & Analysed	Date Sampled	Lowest Sample Value	Mean of Samples	Highest Sample Value	99 Percentile Concentration Limit	100 Percentile Concentration Limit	Exceedance (yes/no)	Comments
Apr-26	Cadmium	(mg/m3)	Every 6 months	1	January 2026	0.0016	0.0016	0.0016			N/A	
Apr-26	Carbon dioxide	(%)	Every 6 months	1	January 2026	9.95	9.95	9.95			N/A	
Apr-26	Chlorine	(mg/m3)	Every 6 months	1	January 2026	<0.44	<0.44	<0.44			N/A	
Apr-26	Fluorine	(mg/m3)	Every 6 months	1	January 2026	7.95	7.95	7.95			N/A	
Apr-26	Hydrogen chloride	(mg/m3)	Every 6 months	1	January 2026	5.3	5.3	5.3			N/A	
Apr-26	Mercury	(mg/m3)	Every 6 months	1	January 2026	0.00007	0.00007	0.00007			N/A	
Apr-26	Solid Particles	(mg/m3)	Quarterly	1	January 2026	<0.8	<0.8	<0.8			N/A	
Apr-26	Sulfuric acid mist and sulfur trioxide (as SO3)	(mg/m3)	Every 6 months	1	January 2026	3.8	3.8	3.8			N/A	
Apr-26	Type 1 and Type 2 substances in aggregate	(mg/m3)	Every 6 months	1	January 2026	0.014	0.014	0.014			N/A	
Apr-26	VOC's as n-propane equivalent	(mg/m3)	Every 6 months	1	January 2026	0.4	0.4	0.4			N/A	

**POINT 5 Boiler number 5 exhaust - duct B marked and shown as EPA ID 5 on The Plans "VX837351\_1\_08" AND "VX837351\_2\_03", AND PROVIDED TO THE EPA ON 23/02/2026 (EPA REFERENCE DOC26/118983).**

Month	Pollutant	Unit of Measure	Sample/Measurement Frequency	Samples Collected & Analysed	Date Sampled	Lowest Sample Value	Mean of Samples	Highest Sample Value	99 Percentile Concentration Limit	100 Percentile Concentration Limit	Exceedance (yes/no)	Comments
Apr-26	Cadmium	(mg/m3)	Every 6 months	1	January 2026	0.0019	0.0019	0.0019			N/A	
Apr-26	Mercury	(mg/m3)	Every 6 months	1	January 2026	<0.000065	<0.000065	<0.000065			N/A	
Apr-26	Solid Particles	(mg/m3)	Quarterly	1	January 2026	<1.12	<1.12	<1.12			N/A	
Apr-26	Type 1 and Type 2 substances in aggregate	(mg/m3)	Every 6 months	1	January 2026	0.242	0.242	0.242			N/A	

**POINT 6 Boiler number 5 exhaust - duct C marked and shown as EPA ID 6 on The Plans "VX837351\_1\_08" AND "VX837351\_2\_03", AND PROVIDED TO THE EPA ON 23/02/2026 (EPA REFERENCE DOC26/118983).**

Month	Pollutant	Unit of Measure	Sample/Measurement Frequency	Samples Collected & Analysed	Date Sampled	Lowest Sample Value	Mean of Samples	Highest Sample Value	99 Percentile Concentration Limit	100 Percentile Concentration Limit	Exceedance (yes/no)	Comments
Apr-26	Cadmium	(mg/m3)	Every 6 months	1	January 2026	0.0018	0.0018	0.0018			N/A	
Apr-26	Carbon dioxide	(%)	Every 6 months	1	January 2026	8.8	8.8	8.8			N/A	
Apr-26	Chlorine	(mg/m3)	Every 6 months	1	January 2026	1.29	1.29	1.29			N/A	
Apr-26	Fluorine	(mg/m3)	Every 6 months	1	January 2026	7.1	7.1	7.1			N/A	
Apr-26	Hydrogen chloride	(mg/m3)	Every 6 months	1	January 2026	6.6	6.6	6.6			N/A	
Apr-26	Mercury	(mg/m3)	Every 6 months	1	January 2026	<0.000074	<0.000074	<0.000074			N/A	
Apr-26	Solid Particles	(mg/m3)	Quarterly	1	January 2026	<1.1	<1.1	<1.1			N/A	
Apr-26	Sulfuric acid mist and sulfur trioxide (as SO3)	(mg/m3)	Every 6 months	1	January 2026	4.45	4.45	4.45			N/A	
Apr-26	Type 1 and Type 2 substances in aggregate	(mg/m3)	Every 6 months	1	January 2026	0.014	0.014	0.014			N/A	
Apr-26	VOC's as n-propane equivalent	(mg/m3)	Every 6 months	1	January 2026	0.3	0.3	0.3			N/A	

**POINT 7 Boiler number 5 exhaust - duct D marked and shown as EPA ID 7 on The Plans "VX837351\_1\_08" AND "VX837351\_2\_03", AND PROVIDED TO THE EPA ON 23/02/2026 (EPA REFERENCE DOC26/118983).**

Month	Pollutant	Unit of Measure	Sample/Measurement Frequency	Samples Collected & Analysed	Date Sampled	Lowest Sample Value	Mean of Samples	Highest Sample Value	99 Percentile Concentration Limit	100 Percentile Concentration Limit	Exceedance (yes/no)	Comments
Apr-26	Cadmium	(mg/m3)	Every 6 months	1	January 2026	0.00077	0.00077	0.00077			N/A	
Apr-26	Mercury	(mg/m3)	Every 6 months	1	January 2026	0.00006	0.00006	0.00006			N/A	
Apr-26	Solid Particles	(mg/m3)	Quarterly	1	January 2026	<1.01	<1.01	<1.01			N/A	
Apr-26	Type 1 and Type 2 substances in aggregate	(mg/m3)	Every 6 months	1	January 2026	0.015	0.015	0.015			N/A	

**POINT 8 Boiler number 6 exhaust - duct A marked and shown as EPA ID 8 on The Plans "VX837351\_1\_08" AND "VX837351\_2\_03", AND PROVIDED TO THE EPA ON 23/02/2026 (EPA REFERENCE DOC26/118983).**

Month	Pollutant	Unit of Measure	Sample/Measurement Frequency	Samples Collected & Analysed	Date Sampled	Lowest Sample Value	Mean of Samples	Highest Sample Value	99 Percentile Concentration Limit	100 Percentile Concentration Limit	Exceedance (yes/no)	Comments
Apr-26	Cadmium	(mg/m3)	Every 6 months								N/A	
Apr-26	Carbon dioxide	(%)	Every 6 months								N/A	
Apr-26	Chlorine	(mg/m3)	Every 6 months								N/A	
Apr-26	Fluorine	(mg/m3)	Every 6 months								N/A	
Apr-26	Hydrogen chloride	(mg/m3)	Every 6 months								N/A	
Apr-26	Mercury	(mg/m3)	Every 6 months								N/A	
Apr-26	Solid Particles	(mg/m3)	Quarterly	1	Feb-26	7.6	7.6	7.6			N/A	
Apr-26	Sulfuric acid mist and sulfur trioxide (as SO3)	(mg/m3)	Every 6 months								N/A	
Apr-26	Type 1 and Type 2 substances in aggregate	(mg/m3)	Every 6 months								N/A	
Apr-26	VOC's as n-propane equivalent	(mg/m3)	Every 6 months								N/A	

**POINT 9 Boiler number 6 exhaust - duct B marked and shown as EPA ID 9 on The Plans "VX837351\_1\_08" AND "VX837351\_2\_03", AND PROVIDED TO THE EPA ON 23/02/2026 (EPA REFERENCE DOC26/118983).**

Month	Pollutant	Unit of Measure	Sample/Measurement Frequency	Samples Collected & Analysed	Date Sampled	Lowest Sample Value	Mean of Samples	Highest Sample Value	99 Percentile Concentration Limit	100 Percentile Concentration Limit	Exceedance (yes/no)	Comments
Apr-26	Cadmium	(mg/m3)	Every 6 months								N/A	
Apr-26	Mercury	(mg/m3)	Every 6 months								N/A	
Apr-26	Solid Particles	(mg/m3)	Quarterly	1	Feb-26	<1.07	<1.07	<1.07			N/A	
Apr-26	Type 1 and Type 2 substances in aggregate	(mg/m3)	Every 6 months								N/A	

**POINT 10** Boiler number 6 exhaust - duct C marked and shown as EPA ID 10 on The Plans "VX837351\_1\_08" AND "VX837351\_2\_03", AND PROVIDED TO THE EPA ON 23/02/2026 (EPA REFERENCE DOC26/118983).

Month	Pollutant	Unit of Measure	Sample/Masurement Frequency	Samples Collected & Analysed	Date Sampled	Lowest Sample Value	Mean of Samples	Highest Sample Value	99 Percentile Concentration Limit	100 Percentile Concentration Limit	Exceedance (yes/no)	Comments
Apr-26	Cadmium	(mg/m3)	Every 6 months								N/A	
Apr-26	Carbon dioxide	(%)	Every 6 months								N/A	
Apr-26	Chlorine	(mg/m3)	Every 6 months								N/A	
Apr-26	Fluorine	(mg/m3)	Every 6 months								N/A	
Apr-26	Hydrogen chloride	(mg/m3)	Every 6 months								N/A	
Apr-26	Mercury	(mg/m3)	Every 6 months								N/A	
Apr-26	Solid Particles	(mg/m3)	Quarterly	1	Feb-26	9.2	9.2	9.2			N/A	
Apr-26	Sulfuric acid mist and sulfur trioxide (as SO3)	(mg/m3)	Every 6 months								N/A	
Apr-26	Type 1 and Type 2 substances in aggregate	(mg/m3)	Every 6 months								N/A	
Apr-26	VOC's as n-propane equivalent	(mg/m3)	Every 6 months								N/A	

**POINT 11** Boiler number 6 exhaust - duct D marked and shown as EPA ID 11 on The Plans "VX837351\_1\_08" AND "VX837351\_2\_03", AND PROVIDED TO THE EPA ON 23/02/2026 (EPA REFERENCE DOC26/118983).

Month	Pollutant	Unit of Measure	Sample/Masurement Frequency	Samples Collected & Analysed	Date Sampled	Lowest Sample Value	Mean of Samples	Highest Sample Value	99 Percentile Concentration Limit	100 Percentile Concentration Limit	Exceedance (yes/no)	Comments
Apr-26	Cadmium	(mg/m3)	Every 6 months								N/A	
Apr-26	Mercury	(mg/m3)	Every 6 months								N/A	
Apr-26	Solid Particles	(mg/m3)	Quarterly	1	Feb-26	2.97	2.97	2.97			N/A	
Apr-26	Type 1 and Type 2 substances in aggregate	(mg/m3)	Every 6 months								N/A	

**POINT 12** Boiler number 5 combined exhaust - duct A and B (points 4 and 5) marked and shown as EPA ID 12 on The Plans "VX837351\_1\_08" AND "VX837351\_2\_03", AND PROVIDED TO THE EPA ON 23/02/2026 (EPA REFERENCE DOC26/118983).

Month	Pollutant	Unit of Measure	Sample/Masurement Frequency	Samples Collected & Analysed	Date Sampled	Lowest Sample Value	Mean of Samples	Highest Sample Value	99 Percentile Concentration Limit	100 Percentile Concentration Limit	Exceedance (yes/no)	Comments
Apr-26	Nitrogen Oxides	(mg/m3)	Continuous	98.6%	Apr-26	336	602	721			N/A	
Apr-26	Sulfur dioxide	(mg/m3)	Continuous	98.9%	Apr-26	430	744	1030			N/A	

**POINT 13** Boiler number 5 combined exhaust - duct C and D (points 6 and 7) marked and shown as EPA ID 13 on The Plans "VX837351\_1\_08" AND "VX837351\_2\_03", AND PROVIDED TO THE EPA ON 23/02/2026 (EPA REFERENCE DOC26/118983).

Month	Pollutant	Unit of Measure	Sample/Masurement Frequency	Samples Collected & Analysed	Date Sampled	Lowest Sample Value	Mean of Samples	Highest Sample Value	99 Percentile Concentration Limit	100 Percentile Concentration Limit	Exceedance (yes/no)	Comments
Apr-26	Nitrogen Oxides	(mg/m3)	Continuous	94.3%	Apr-26	368	605	773			N/A	
Apr-26	Sulfur dioxide	(mg/m3)	Continuous	94.3%	Apr-26	747	867	1145			N/A	

**POINT 14** Boiler number 6 combined exhaust - duct A and B (points 8 and 9) marked and shown as EPA ID 14 on The Plans "VX837351\_1\_08" AND "VX837351\_2\_03", AND PROVIDED TO THE EPA ON 23/02/2026 (EPA REFERENCE DOC26/118983).

Month	Pollutant	Unit of Measure	Sample/Masurement Frequency	Samples Collected & Analysed	Date Sampled	Lowest Sample Value	Mean of Samples	Highest Sample Value	99 Percentile Concentration Limit	100 Percentile Concentration Limit	Exceedance (yes/no)	Comments
Apr-26	Nitrogen Oxides	(mg/m3)	Continuous	98.1%	Apr-26	406	621	797			N/A	
Apr-26	Sulfur dioxide	(mg/m3)	Continuous	97.8%	Apr-26	582	790	1048			N/A	

**POINT 15** Boiler number 6 combined exhaust - duct C and D (points 10 and 11) marked and shown as EPA ID 12 on The Plans "VX837351\_1\_08" AND "VX837351\_2\_03", AND PROVIDED TO THE EPA ON 23/02/2026 (EPA REFERENCE DOC26/118983).

Month	Pollutant	Unit of Measure	Sample/Masurement Frequency	Samples Collected & Analysed	Date Sampled	Lowest Sample Value	Mean of Samples	Highest Sample Value	99 Percentile Concentration Limit	100 Percentile Concentration Limit	Exceedance (yes/no)	Comments
Apr-26	Nitrogen Oxides	(mg/m3)	Continuous	97.9%	Apr-26	353	580	746			N/A	
Apr-26	Sulfur dioxide	(mg/m3)	Continuous	100.0%	Apr-26	457	716	968			N/A	

POINT 22 Discharge of cooling water from the cooling water outlet canal to Wye Bay marked and shown as EPA ID 22 on The Plans "VX837351_1_08" AND "VX837351_2_03", AND PROVIDED TO THE EPA ON 23/02/2026 [EPA REFERENCE DOC26/118983].												
Month	Pollutant	Unit of Measure	Sample/Measurement Frequency	Samples Collected & Analysed	Date Sampled	Lowest Sample Value	Mean of Samples	Highest Sample Value	98.5 Percentile Concentration Limit	100 Percentile Concentration Limit	Exceed 100% Limit (yes/no)	Comments
Apr-26	Chlorine (free residual)	(mg/L)	Monthly during discharge	1	4/02/2026	0	0	0		0.2	No	
Apr-26	Copper	(mg/L)	Monthly during discharge	1	4/02/2026	0.006	0.006	0.006		0.005	Yes	
Apr-26	Copper (dissolved)	(mg/L)	Monthly during discharge	1	4/02/2026	<0.001	<0.001	<0.001				
Apr-26	Iron	(mg/L)	Monthly during discharge	1	4/02/2026	0.08	0.08	0.08		0.3	No	
Apr-26	Iron (dissolved)	(mg/L)	Monthly during discharge	1	4/02/2026	<0.01	<0.01	<0.01				
Apr-26	Oil and Grease	Visible	Monthly during discharge	100%	Apr-26	NIL	NIL	NIL				
Apr-26	Selenium	(mg/L)	Monthly during discharge	1	4/02/2026	<0.002	<0.002	<0.002		0.005	No	
Apr-26	Selenium (dissolved)	(mg/L)	Monthly during discharge	1	4/02/2026	0.001	0.001	0.001				
Apr-26	Temperature	(°C)	Monthly during discharge	100%	Apr-26	24.3	28.0	31.3	35	37.5	No	

POINT 23 Discharge of supernatant water from the ash dam to the cooling water outlet canal to Wye Bay marked and shown as EPA ID 23 on The Plans "VX837351_1_08" AND "VX837351_2_03", AND PROVIDED TO THE EPA ON 23/02/2026 [EPA REFERENCE DOC26/118983].												
Month	Pollutant	Unit of Measure	Sample/Measurement Frequency	Samples Collected & Analysed	Date Sampled	Lowest Sample Value	Mean of Samples	Highest Sample Value	Discharge (yes/no)	100 Percentile Concentration Limit	Exceedance (yes/no)	Comments
Apr-26	Aluminium	(mg/L)	Monthly	1	4/02/2026	0.04	0.04	0.04	Yes			
Apr-26	Aluminium (dissolved)	(mg/L)	Monthly	1	4/02/2026	0.02	0.02	0.02	Yes			
Apr-26	Antimony	(mg/L)	Quarterly	1	4/02/2026	0.011	0.011	0.011	Yes			
Apr-26	Antimony (dissolved)	(mg/L)	Quarterly	1	4/02/2026	0.012	0.012	0.012	Yes			
Apr-26	Arsenic (III)	(mg/L)	Monthly	1	4/02/2026	<0.001	<0.001	<0.001	Yes			
Apr-26	Arsenic (V)	(mg/L)	Monthly	1	4/02/2026	0.007	0.007	0.007	Yes			
Apr-26	Arsenic	(mg/L)	Monthly	1	4/02/2026	0.007	0.007	0.007	Yes			
Apr-26	Barium	(mg/L)	Quarterly	1	4/02/2026	0.18	0.18	0.18	Yes			
Apr-26	Barium (dissolved)	(mg/L)	Quarterly	1	4/02/2026	0.17	0.17	0.17	Yes			
Apr-26	Beryllium	(mg/L)	Monthly	1	4/02/2026	<0.001	<0.001	<0.001	Yes			
Apr-26	Beryllium (dissolved)	(mg/L)	Monthly	1	4/02/2026	<0.0005	<0.0005	<0.0005	Yes			
Apr-26	Boron	(mg/L)	Monthly	1	4/02/2026	4.7	4.7	4.7	Yes			
Apr-26	Boron (dissolved)	(mg/L)	Monthly	1	4/02/2026	4.9	4.9	4.9	Yes			
Apr-26	Cadmium	(mg/L)	Monthly	1	4/02/2026	0.0001	0.0001	0.0001	Yes			
Apr-26	Cadmium (dissolved)	(mg/L)	Monthly	1	4/02/2026	<0.0001	<0.0001	<0.0001	Yes			
Apr-26	Calcium	(mg/L)	Quarterly	1	4/02/2026	480	480	480	Yes			
Apr-26	Chloride	(mg/L)	Quarterly	1	4/02/2026	21000	21000	21000	Yes			
Apr-26	Chromium (trivalent)	(mg/L)	Monthly	1	4/02/2026	<0.005	<0.005	<0.005	Yes			
Apr-26	Chromium (hexavalent)	(mg/L)	Monthly	1	4/02/2026	<0.005	<0.005	<0.005	Yes			
Apr-26	Chromium (total)	(mg/L)	Monthly	1	4/02/2026	0.014	0.014	0.014	Yes			
Apr-26	Chromium (dissolved)	(mg/L)	Monthly	1	4/02/2026	0.01	0.01	0.01	Yes			
Apr-26	Cobalt	(mg/L)	Monthly	1	4/02/2026	<0.002	<0.002	<0.002	Yes			
Apr-26	Cobalt (dissolved)	(mg/L)	Monthly	1	4/02/2026	<0.001	<0.001	<0.001	Yes			
Apr-26	Copper	(mg/L)	Monthly	1	4/02/2026	<0.002	<0.002	<0.002	Yes			
Apr-26	Copper (dissolved)	(mg/L)	Monthly	1	4/02/2026	<0.001	<0.001	<0.001	Yes			
Apr-26	Dissolved organic carbon	(mg/L)	Quarterly	1	4/02/2026	2	2	2	Yes			
Apr-26	Electrical conductivity	(µS/cm)	Monthly	1	4/02/2026	46815	46815	46815	Yes			
Apr-26	Fluoride	(mg/L)	Quarterly	1	4/02/2026	1.2	1.2	1.2	Yes			
Apr-26	Hardness (as calcium carbonate)	(mg/L CaCO <sub>3</sub> )	Quarterly	1	4/02/2026	5500	5500	5500	Yes			
Apr-26	Iron	(mg/L)	Monthly	1	4/02/2026	0.13	0.13	0.13	Yes			
Apr-26	Iron (dissolved)	(mg/L)	Monthly	1	4/02/2026	0.02	0.02	0.02	Yes			
Apr-26	Lead	(mg/L)	Monthly	1	4/02/2026	0.005	0.005	0.005	Yes			
Apr-26	Lead (dissolved)	(mg/L)	Monthly	1	4/02/2026	0.002	0.002	0.002	Yes			
Apr-26	Magnesium	(mg/L)	Quarterly	1	4/02/2026	1000	1000	1000	Yes			
Apr-26	Magnesium (dissolved)	(mg/L)	Quarterly	1	4/02/2026	1000	1000	1000	Yes			
Apr-26	Manganese	(mg/L)	Monthly	1	4/02/2026	0.017	0.017	0.017	Yes			
Apr-26	Manganese (dissolved)	(mg/L)	Monthly	1	4/02/2026	0.007	0.007	0.007	Yes			
Apr-26	Mercury	(mg/L)	Monthly	1	4/02/2026	<0.00005	<0.00005	<0.00005	Yes			
Apr-26	Mercury (dissolved)	(mg/L)	Monthly	1	4/02/2026	<0.00005	<0.00005	<0.00005	Yes			
Apr-26	Molybdenum	(mg/L)	Monthly	1	4/02/2026	0.095	0.095	0.095	Yes			
Apr-26	Molybdenum (dissolved)	(mg/L)	Monthly	1	4/02/2026	0.049	0.049	0.049	Yes			
Apr-26	Nickel	(mg/L)	Monthly	1	4/02/2026	<0.002	<0.002	<0.002	Yes			
Apr-26	Nickel (dissolved)	(mg/L)	Monthly	1	4/02/2026	<0.001	<0.001	<0.001	Yes			
Apr-26	Nitrate + nitrite (oxidised nitrogen)	(mg/L)	Monthly	1	4/02/2026	0.149	0.149	0.149	Yes			
Apr-26	Nitrogen (ammonia)	(mg/L)	Monthly	1	4/02/2026	0.06	0.06	0.06	Yes			
Apr-26	Nitrogen (total)	(mg/L)	Monthly	1	4/02/2026	0.4	0.4	0.4	Yes			
Apr-26	pH	pH	Monthly	1	4/02/2026	8.87	8.87	8.87	Yes	6.5 - 9.5	No	
Apr-26	Phosphorus (total)	(mg/L)	Monthly	1	4/02/2026	0.10	0.10	0.10	Yes			
Apr-26	Potassium	(mg/L)	Quarterly	1	4/02/2026	330	330	330	Yes			
Apr-26	Reactive Phosphorus	(mg/L)	Monthly	1	4/02/2026	0.040	0.040	0.040	Yes			
Apr-26	Selenium	(mg/L)	Monthly	1	4/02/2026	0.03	0.03	0.03	Yes			
Apr-26	Selenium (dissolved)	(mg/L)	Monthly	1	4/02/2026	0.028	0.028	0.028	Yes			
Apr-26	Silver	(mg/L)	Quarterly	1	4/02/2026	<0.001	<0.001	<0.001	Yes			
Apr-26	Silver (dissolved)	(mg/L)	Quarterly	1	4/02/2026	<0.001	<0.001	<0.001	Yes			
Apr-26	Sodium	(mg/L)	Quarterly	1	4/02/2026	10000	10000	10000	Yes			
Apr-26	Sulfate	(mg/L)	Quarterly	1	4/02/2026	3400	3400	3400	Yes			
Apr-26	Total Suspended Solids	(mg/L)	Quarterly	1	4/02/2026	10	10	10	Yes	50	No	
Apr-26	Turbidity	(ntu)	Monthly	1	4/02/2026	2	2	2	Yes			

Apr-26	Vanadium	(mg/L)	Monthly	1	4/02/2026	0.055	0.055	0.055	Yes			
Apr-26	Vanadium (dissolved)	(mg/L)	Monthly	1	4/02/2026	0.039	0.039	0.039	Yes			
Apr-26	Zinc	(mg/L)	Monthly	1	4/02/2026	0.005	0.005	0.005	Yes			
Apr-26	Zinc (dissolved)	(mg/L)	Monthly	1	4/02/2026	0.006	0.006	0.006	Yes			

**POINT 24 Discharge of seepage water from the ash dam rehabilitation area to Mannering Bay marked and shown as EPA ID 24 on The Plans "VX837351\_1\_08" AND "VX837351\_2\_03", AND PROVIDED TO THE EPA ON 23/02/2026 (EPA REFERENCE DOC26/118983).**

Month	Pollutant	Unit of Measure	Sample/Measurement Frequency	Samples Collected & Analysed	Date Sampled	Lowest Sample Value	Mean of Samples	Highest Sample Value	Discharge (yes/no)	100 Percentile Concentration Limit	Exceedance (yes/no)	Comments
Apr-26	Aluminium (dissolved)	(mg/L)	Monthly	1	4/02/2026	0.06	0.06	0.06	Yes			
Apr-26	Antimony (dissolved)	(mg/L)	Quarterly		4/02/2026	0.001	0.001	0.001	Yes			
Apr-26	Arsenic (III)	(mg/L)	Monthly	1	4/02/2026	<0.001	<0.001	<0.001	Yes			
Apr-26	Arsenic (V)	(mg/L)	Monthly	1	4/02/2026	0.002	0.002	0.002	Yes			
Apr-26	Arsenic	(mg/L)	Monthly	1	4/02/2026	0.002	0.002	0.002	Yes			
Apr-26	Barium (dissolved)	(mg/L)	Quarterly		4/02/2026	0.084	0.084	0.084	Yes			
Apr-26	Beryllium (dissolved)	(mg/L)	Monthly	1	4/02/2026	<0.0005	<0.0005	<0.0005	Yes			
Apr-26	Boron (dissolved)	(mg/L)	Monthly	1	4/02/2026	9.1	9.1	9.1	Yes			
Apr-26	Cadmium (dissolved)	(mg/L)	Monthly	1	4/02/2026	0.0001	0.0001	0.0001	Yes			
Apr-26	Calcium	(mg/L)	Quarterly		4/02/2026	1200	1200	1200	Yes			
Apr-26	Chloride	(mg/L)	Quarterly		4/02/2026	13000	13000	13000	Yes			
Apr-26	Chromium (trivalent)	(mg/L)	Monthly	1	4/02/2026	<0.005	<0.005	<0.005	Yes			
Apr-26	Chromium (VI) Compounds	(mg/L)	Monthly	1	4/02/2026	<0.005	<0.005	<0.005	Yes			
Apr-26	Chromium (dissolved)	(mg/L)	Monthly	1	4/02/2026	<0.001	<0.001	<0.001	Yes			
Apr-26	Cobalt (dissolved)	(mg/L)	Monthly	1	4/02/2026	<0.001	<0.001	<0.001	Yes			
Apr-26	Copper (dissolved)	(mg/L)	Monthly	1	4/02/2026	<0.001	<0.001	<0.001	Yes			
Apr-26	Dissolved organic carbon	(mg/L)	Quarterly		4/02/2026	<1	<1	<1	Yes			
Apr-26	Electrical conductivity	(µS/cm)	Monthly	1	4/02/2026	30113	30113	30113	Yes			
Apr-26	Fluoride	(mg/L)	Quarterly		4/02/2026	0.3	0.3	0.3	Yes			
Apr-26	Hardness (as calcium carbonate)	(mg/L CaCO <sub>3</sub> )	Quarterly		4/02/2026	3300	3300	3300	Yes			
Apr-26	Iron (dissolved)	(mg/L)	Monthly	1	4/02/2026	0.09	0.09	0.09	Yes			
Apr-26	Lead (dissolved)	(mg/L)	Monthly	1	4/02/2026	<0.001	<0.001	<0.001	Yes			
Apr-26	Magnesium (dissolved)	(mg/L)	Quarterly		4/02/2026	74	74	74	Yes			
Apr-26	Manganese (dissolved)	(mg/L)	Monthly	1	4/02/2026	0.160	0.160	0.160	Yes			
Apr-26	Mercury (dissolved)	(mg/L)	Monthly	1	4/02/2026	<0.00005	<0.00005	<0.00005	Yes			
Apr-26	Molybdenum (dissolved)	(mg/L)	Monthly	1	4/02/2026	0.51	0.51	0.51	Yes			
Apr-26	Nickel (dissolved)	(mg/L)	Monthly	1	4/02/2026	<0.001	<0.001	<0.001	Yes			
Apr-26	Nitrate + nitrite (oxidised nitrogen)	(mg/L)	Monthly	1	4/02/2026	0.25	0.25	0.25	Yes			
Apr-26	Nitrogen (ammonia)	(mg/L)	Monthly	1	4/02/2026	1.30	1.30	1.30	Yes			
Apr-26	Nitrogen (total)	(mg/L)	Monthly	1	4/02/2026	1.6	1.6	1.6	Yes			
Apr-26	pH		Monthly	1	4/02/2026	8.26	8.26	8.26	Yes	6.5 - 9.5	No	
Apr-26	Phosphorus (total)	(mg/L)	Monthly	1	4/02/2026	<0.05	<0.05	<0.05	Yes			
Apr-26	Potassium	(mg/L)	Quarterly		4/02/2026	280	280	280	Yes			
Apr-26	Reactive Phosphorus	(mg/L)	Monthly	1	4/02/2026	<0.005	<0.005	<0.005	Yes			
Apr-26	Selenium (dissolved)	(mg/L)	Monthly	1	4/02/2026	0.002	0.002	0.002	Yes			
Apr-26	Silver (dissolved)	(mg/L)	Quarterly		4/02/2026	<0.001	<0.001	<0.001	Yes			
Apr-26	Sodium	(mg/L)	Quarterly		4/02/2026	5700	5700	5700	Yes			
Apr-26	Sulfate	(mg/L)	Quarterly		4/02/2026	1800	1800	1800	Yes			
Apr-26	Total Suspended Solids	(mg/L)	Quarterly		4/02/2026	7	7	7	Yes	50	No	
Apr-26	Turbidity	(ntu)	Monthly	1	4/02/2026				Yes			
Apr-26	Vanadium (dissolved)	(mg/L)	Monthly	1	4/02/2026	0.012	0.012	0.012	Yes			
Apr-26	Zinc (dissolved)	(mg/L)	Monthly	1	4/02/2026	0.010	0.010	0.010	Yes			

**POINT 25 Discharge of over boarded water from the ash dam to Mannering Bay marked and shown as EPA ID 25 on The Plans "VX837351\_1\_08" AND "VX837351\_2\_03", AND PROVIDED TO THE EPA ON 23/02/2026 (EPA REFERENCE DOC26/118983).**

Month	Pollutant	Unit of Measure	Sample/Measurement Frequency	Samples Collected & Analysed	Date Sampled	Lowest Sample Value	Mean of Samples	Highest Sample Value	Discharge (yes/no)	100 Percentile Concentration Limit	Exceedance (yes/no)	Comments
Apr-26	Aluminium	(mg/L)	Daily (if discharge)						No			
Apr-26	Aluminium (dissolved)	(mg/L)	Daily (if discharge)						No			
Apr-26	Antimony	(mg/L)	Daily (if discharge)						No			
Apr-26	Antimony (dissolved)	(mg/L)	Daily (if discharge)						No			
Apr-26	Arsenic (III)	(mg/L)	Daily (if discharge)						No			
Apr-26	Arsenic (V)	(mg/L)	Daily (if discharge)						No			
Apr-26	Arsenic (total)	(mg/L)	Daily (if discharge)						No			
Apr-26	Arsenic (dissolved)	(mg/L)	Daily (if discharge)						No			
Apr-26	Barium	(mg/L)	Daily (if discharge)						No			
Apr-26	Barium (dissolved)	(mg/L)	Daily (if discharge)						No			
Apr-26	Beryllium	(mg/L)	Daily (if discharge)						No			
Apr-26	Beryllium (dissolved)	(mg/L)	Daily (if discharge)						No			
Apr-26	Boron	(mg/L)	Daily (if discharge)						No			
Apr-26	Boron (dissolved)	(mg/L)	Daily (if discharge)						No			
Apr-26	Cadmium	(mg/L)	Daily (if discharge)						No			
Apr-26	Cadmium (dissolved)	(mg/L)	Daily (if discharge)						No			
Apr-26	Calcium	(mg/L)	Daily (if discharge)						No			
Apr-26	Chloride	(mg/L)	Daily (if discharge)						No			
Apr-26	Chromium (trivalent)	(mg/L)	Daily (if discharge)						No			
Apr-26	Chromium (VI) Compounds	(mg/L)	Daily (if discharge)						No			
Apr-26	Chromium (total)	(mg/L)	Daily (if discharge)						No			
Apr-26	Chromium (dissolved)	(mg/L)	Daily (if discharge)						No			
Apr-26	Cobalt	(mg/L)	Daily (if discharge)						No			
Apr-26	Cobalt (dissolved)	(mg/L)	Daily (if discharge)						No			

Apr-26	Copper	(mg/L)	Daily (if discharge)							No		
Apr-26	Copper (dissolved)	(mg/L)	Daily (if discharge)							No		
Apr-26	Dissolved organic carbon	(mg/L)	Daily (if discharge)							No		
Apr-26	Electrical conductivity	(uS/cm)	Daily (if discharge)							No		
Apr-26	Fluoride	(mg/L)	Daily (if discharge)							No		
Apr-26	Hardness (as calcium carbonate)	(mg/L CaCO <sub>3</sub> )	Daily (if discharge)							No		
Apr-26	Iron	(mg/L)	Daily (if discharge)							No		
Apr-26	Iron (dissolved)	(mg/L)	Daily (if discharge)							No		
Apr-26	Lead	(mg/L)	Daily (if discharge)							No		
Apr-26	Lead (dissolved)	(mg/L)	Daily (if discharge)							No		
Apr-26	Magnesium	(mg/L)	Daily (if discharge)							No		
Apr-26	Manganese	(mg/L)	Daily (if discharge)							No		
Apr-26	Manganese (dissolved)	(mg/L)	Daily (if discharge)							No		
Apr-26	Mercury	(mg/L)	Daily (if discharge)							No		
Apr-26	Mercury (dissolved)	(mg/L)	Daily (if discharge)							No		
Apr-26	Molybdenum	(mg/L)	Daily (if discharge)							No		
Apr-26	Molybdenum (dissolved)	(mg/L)	Daily (if discharge)							No		
Apr-26	Nickel	(mg/L)	Daily (if discharge)							No		
Apr-26	Nickel (dissolved)	(mg/L)	Daily (if discharge)							No		
Apr-26	Nitrate + nitrite (oxidised nitrogen)	(mg/L)	Daily (if discharge)							No		
Apr-26	Nitrogen (ammonia)	(mg/L)	Daily (if discharge)							No		
Apr-26	Nitrogen (total)	(mg/L)	Daily (if discharge)							No		
Apr-26	pH	pH	Daily (if discharge)							No	6.5 - 9	No
Apr-26	Phosphorus (total)	(mg/L)	Daily (if discharge)							No		
Apr-26	Potassium	(mg/L)	Daily (if discharge)							No		
Apr-26	Reactive Phosphorus	(mg/L)	Daily (if discharge)							No		
Apr-26	Selenium	(mg/L)	Daily (if discharge)							No		
Apr-26	Selenium (dissolved)	(mg/L)	Daily (if discharge)							No		
Apr-26	Silver	(mg/L)	Daily (if discharge)							No		
Apr-26	Silver (dissolved)	(mg/L)	Daily (if discharge)							No		
Apr-26	Sodium	(mg/L)	Daily (if discharge)							No		
Apr-26	Sulfate	(mg/L)	Daily (if discharge)							No		
Apr-26	Total Suspended Solids	(mg/L)	Daily (if discharge)							No	50	No
Apr-26	Turbidity	(ntu)	Daily (if discharge)							No		
Apr-26	Vanadium	(mg/L)	Daily (if discharge)							No		
Apr-26	Vanadium (dissolved)	(mg/L)	Daily (if discharge)							No		
Apr-26	Zinc	(mg/L)	Daily (if discharge)							No		
Apr-26	Zinc (dissolved)	(mg/L)	Daily (if discharge)							No		

**POINT 43** Seepage collection point on southern side of ash dam which is returned to ash dam marked as AD-SW01 on The Plans "VX837351\_1\_08" AND "VX837351\_2\_03", AND PROVIDED TO THE EPA ON 23/02/2026 (EPA REFERENCE DOC26/118983).

Month	Pollutant	Unit of Measure	Sample/Measurement Frequency	Samples Collected & Analysed	Date Sampled	Lowest Sample Value	Mean of Samples	Highest Sample Value	Discharge (yes/no)	100 Percentile Concentration Limit	Exceedance (yes/no)	Comments
Apr-26	Aluminium (dissolved)	(mg/L)	Monthly	1	4/02/2026	0.06	0.06	0.06	N/A			
Apr-26	Antimony (dissolved)	(mg/L)	Quarterly	1	4/02/2026	0.001	0.001	0.001	N/A			

Apr-26	Arsenic (III)	(mg/L)	Monthly	1	4/02/2026	<0.001	<0.001	<0.001	N/A			
Apr-26	Arsenic (V)	(mg/L)	Monthly	1	4/02/2026	0.002	0.002	0.002	N/A			
Apr-26	Arsenic (dissolved)	(mg/L)	Monthly	1	4/02/2026	0.002	0.002	0.002	N/A			
Apr-26	Barium (dissolved)	(mg/L)	Quarterly	1	4/02/2026	0.084	0.084	0.084	N/A			
Apr-26	Beryllium (dissolved)	(mg/L)	Monthly	1	4/02/2026	<0.0005	<0.0005	<0.0005	N/A			
Apr-26	Boron (dissolved)	(mg/L)	Monthly	1	4/02/2026	9.1	9.1	9.1	N/A			
Apr-26	Cadmium (dissolved)	(mg/L)	Monthly	1	4/02/2026	0.0001	0.0001	0.0001	N/A			
Apr-26	Calcium	(mg/L)	Quarterly	1	4/02/2026	1200	1200	1200	N/A			
Apr-26	Chloride	(mg/L)	Quarterly	1	4/02/2026	13000	13000	13000	N/A			
Apr-26	Chromium (trivalent)	(mg/L)	Monthly	1	4/02/2026	<0.005	<0.005	<0.005	N/A			
Apr-26	Chromium (VI) Compounds	(mg/L)	Monthly	1	4/02/2026	<0.005	<0.005	<0.005	N/A			
Apr-26	Chromium (dissolved)	(mg/L)	Monthly	1	4/02/2026	<0.001	<0.001	<0.001	N/A			
Apr-26	Cobalt (dissolved)	(mg/L)	Monthly	1	4/02/2026	<0.001	<0.001	<0.001	N/A			
Apr-26	Copper (dissolved)	(mg/L)	Monthly	1	4/02/2026	<0.001	<0.001	<0.001	N/A			
Apr-26	Dissolved organic carbon	(mg/L)	Quarterly	1	4/02/2026	<1	<1	<1	N/A			
Apr-26	Electrical conductivity	(µS/cm)	Monthly	1	4/02/2026	26092	26092	26092	N/A			
Apr-26	Fluoride	(mg/L)	Quarterly	1	4/02/2026	0.30	0.30	0.30	N/A			
Apr-26	Hardness (as calcium carbonate)	(mg/L CaCO <sub>3</sub> )	Quarterly	1	4/02/2026	3300	3300	3300	N/A			
Apr-26	Iron (dissolved)	(mg/L)	Monthly	1	4/02/2026	0.09	0.09	0.09	N/A			
Apr-26	Lead (dissolved)	(mg/L)	Monthly	1	4/02/2026	<0.001	<0.001	<0.001	N/A			
Apr-26	Magnesium (dissolved)	(mg/L)	Quarterly	1	4/02/2026	74	74	74	N/A			
Apr-26	Manganese (dissolved)	(mg/L)	Monthly	1	4/02/2026	0.16	0.16	0.16	N/A			
Apr-26	Mercury (dissolved)	(mg/L)	Monthly	1	4/02/2026	<0.00005	<0.00005	<0.00005	N/A			
Apr-26	Molybdenum (dissolved)	(mg/L)	Monthly	1	4/02/2026	0.51	0.51	0.51	N/A			
Apr-26	Nickel (dissolved)	(mg/L)	Monthly	1	4/02/2026	<0.001	<0.001	<0.001	N/A			
Apr-26	Nitrate + nitrite (oxidised nitrogen)	(mg/L)	Monthly	1	4/02/2026	0.25	0.25	0.25	N/A			
Apr-26	Nitrogen (ammonia)	(mg/L)	Monthly	1	4/02/2026	1.3	1.3	1.3	N/A			
Apr-26	Nitrogen (total)	(mg/L)	Monthly	1	4/02/2026	1.6	1.6	1.6	N/A			
Apr-26	pH	pH	Monthly	1	4/02/2026	8.26	8.26	8.26	N/A			
Apr-26	Phosphorus (total)	(mg/L)	Monthly	1	4/02/2026	<0.05	<0.05	<0.05	N/A			
Apr-26	Potassium	(mg/L)	Quarterly	1	4/02/2026	280	280	280	N/A			
Apr-26	Reactive Phosphorus	(mg/L)	Monthly	1	4/02/2026	<0.005	<0.005	<0.005	N/A			
Apr-26	Selenium (dissolved)	(mg/L)	Monthly	1	4/02/2026	0.002	0.002	0.002	N/A			

Apr-26	Silver (dissolved)	(mg/L)	Quarterly	1	4/02/2026	<0.001	<0.001	<0.001	N/A		
Apr-26	Sodium	(mg/L)	Quarterly	1	4/02/2026	5700	5700	5700	N/A		
Apr-26	Sulfate	(mg/L)	Quarterly	1	4/02/2026	1800	1800	1800	N/A		
Apr-26	Total Suspended Solids	(mg/L)	Quarterly	1	4/02/2026	7	7	7	N/A		
Apr-26	Turbidity	(ntu)	Monthly	1	4/02/2026				N/A		
Apr-26	Vanadium (dissolved)	(mg/L)	Monthly	1	4/02/2026	0.012	0.012	0.012	N/A		
Apr-26	Zinc (dissolved)	(mg/L)	Monthly	1	4/02/2026	0.01	0.01	0.01	N/A		

POINT 30 Groundwater quality monitoring bore marked and shown as EPA ID 30 on The Plans "VX837351_1_08" AND "VX837351_2_03", AND PROVIDED TO THE EPA ON 23/02/2026 (EPA REFERENCE DOC26/118983).												
Month	Pollutant	Unit of Measure	Sample/Measurement Frequency	Samples Collected & Analysed	Date Sampled	Lowest Sample Value	Mean of Samples	Highest Sample Value	99 Percentile Concentration Limit	100 Percentile Concentration Limit	Exceedance (yes/no)	Comments
Apr-26	Aluminium (dissolved)	(mg/L)	Quarterly	1	10/04/2026	0.86	0.86	0.86				
Apr-26	Ammonia	(mg/L)	Quarterly	1	10/04/2026	4	4	4				
Apr-26	Antimony (dissolved)	(mg/L)	6-monthly		10/04/2026							
Apr-26	Arsenic (III)	(mg/L)	Quarterly	1	10/04/2026	0.005	0.005	0.005				
Apr-26	Arsenic (V)	(mg/L)	Quarterly	1	10/04/2026	0.006	0.006	0.006				
Apr-26	Arsenic (dissolved)	(mg/L)	Quarterly	1	10/04/2026	0.011	0.011	0.011				
Apr-26	Barium (dissolved)	(mg/L)	6-monthly		10/04/2026							
Apr-26	Beryllium (dissolved)	(mg/L)	6-monthly		10/04/2026							
Apr-26	Boron (dissolved)	(mg/L)	Quarterly	1	10/04/2026	<0.01	<0.01	<0.01				
Apr-26	Cadmium (dissolved)	(mg/L)	Quarterly	1	10/04/2026	0.9	0.9	0.9				
Apr-26	Calcium (dissolved)	(mg/L)	6-monthly		10/04/2026							
Apr-26	Chloride	(mg/L)	6-monthly		10/04/2026							
Apr-26	Chromium (hexavalent)	(mg/L)	Quarterly	1	10/04/2026	<0.005	<0.005	<0.005				
Apr-26	Chromium (dissolved)	(mg/L)	Quarterly	1	10/04/2026	<0.0001	<0.0001	<0.0001				
Apr-26	Chromium (trivalent)	(mg/L)	Quarterly	1	10/04/2026	<0.005	<0.005	<0.005				
Apr-26	Cobalt (dissolved)	(mg/L)	Quarterly	1	10/04/2026	0.065	0.065	0.065				
Apr-26	Copper (dissolved)	(mg/L)	Quarterly	1	10/04/2026	<0.001	<0.001	<0.001				
Apr-26	Dissolved organic carbon	(mg/L)	6-monthly		10/04/2026							
Apr-26	Electrical conductivity	(us/cm)	Quarterly	1	10/04/2026	33756	33756	33756				
Apr-26	Fluoride	(mg/L)	6-monthly		10/04/2026							
Apr-26	Hardness (as calcium carbonate)	(mg/L)	6-monthly		10/04/2026							
Apr-26	Iron (dissolved)	(mg/L)	6-monthly		10/04/2026							
Apr-26	Lead (dissolved)	(mg/L)	Quarterly	1	10/04/2026	<0.001	<0.001	<0.001				
Apr-26	Magnesium (dissolved)	(mg/L)	6-monthly		10/04/2026							
Apr-26	Manganese (dissolved)	(mg/L)	Quarterly	1	10/04/2026	4.4	4.4	4.4				
Apr-26	Mercury (dissolved)	(mg/L)	Quarterly	1	10/04/2026	<0.00005	<0.00005	<0.00005				
Apr-26	Molybdenum (dissolved)	(mg/L)	6-monthly		10/04/2026							
Apr-26	Nickel (dissolved)	(mg/L)	6-monthly		10/04/2026							
Apr-26	Nitrate	(mg/L)	Quarterly	1	10/04/2026	0.059	0.059	0.059				
Apr-26	Nitrogen (total)	(mg/L)	Quarterly	1	10/04/2026	5	5	5				
Apr-26	Oxides of nitrogen	(mg/L)	6-monthly		10/04/2026							
Apr-26	pH	(pH)	Quarterly	1	10/04/2026	5.8	5.8	5.8				
Apr-26	Potassium	(mg/L)	6-monthly		10/04/2026							
Apr-26	Reactive phosphorus	(mg/L)	6-monthly		10/04/2026							
Apr-26	Selenium (dissolved)	(mg/L)	6-monthly		10/04/2026							
Apr-26	Silver (dissolved)	(mg/L)	Quarterly	1	10/04/2026	<0.001	<0.001	<0.001				
Apr-26	Sodium	(mg/L)	6-monthly		10/04/2026							
Apr-26	Standing water level	(m)	Quarterly	1	10/04/2026	3.8	3.8	3.8				
Apr-26	Sulfate	(mg/L)	6-monthly		10/04/2026							
Apr-26	Total dissolved solids	(mg/L)	6-monthly		10/04/2026							
Apr-26	Total phosphorus	(mg/L)	Quarterly	1	10/04/2026	0.050	0.050	0.050				
Apr-26	Vanadium (dissolved)	(mg/L)	6-monthly		10/04/2026							
Apr-26	Zinc (dissolved)	(mg/L)	Quarterly	1	10/04/2026	0.021	0.021	0.021				

POINT 31 Groundwater quality monitoring bore marked and shown as EPA ID 31 on The Plans "VX837351_1_08" AND "VX837351_2_03", AND PROVIDED TO THE EPA ON 23/02/2026 (EPA REFERENCE DOC26/118983).												
Month	Pollutant	Unit of Measure	Sample/Measurement Frequency	Samples Collected & Analysed	Date Sampled	Lowest Sample Value	Mean of Samples	Highest Sample Value	99 Percentile Concentration Limit	100 Percentile Concentration Limit	Exceedance (yes/no)	Comments
Apr-26	Aluminium (dissolved)	(mg/L)	Quarterly	1	10/04/2026	0.180	0.180	0.180				
Apr-26	Ammonia	(mg/L)	Quarterly	1	10/04/2026	1.0	1.0	1.0				
Apr-26	Antimony (dissolved)	(mg/L)	6-monthly		10/04/2026							
Apr-26	Arsenic (III)	(mg/L)	Quarterly	1	10/04/2026	0.003	0.003	0.003				
Apr-26	Arsenic (V)	(mg/L)	Quarterly	1	10/04/2026	0.006	0.006	0.006				
Apr-26	Arsenic (dissolved)	(mg/L)	Quarterly	1	10/04/2026	0.009	0.009	0.009				
Apr-26	Barium (dissolved)	(mg/L)	6-monthly		10/04/2026							
Apr-26	Beryllium (dissolved)	(mg/L)	6-monthly		10/04/2026							
Apr-26	Boron (dissolved)	(mg/L)	Quarterly	1	10/04/2026	0.10	0.10	0.10				
Apr-26	Cadmium (dissolved)	(mg/L)	Quarterly	1	10/04/2026	<0.0001	<0.0001	<0.0001				
Apr-26	Calcium (dissolved)	(mg/L)	6-monthly		10/04/2026							
Apr-26	Chloride	(mg/L)	6-monthly		10/04/2026							
Apr-26	Chromium (hexavalent)	(mg/L)	Quarterly	1	10/04/2026	<0.005	<0.005	<0.005				
Apr-26	Chromium (dissolved)	(mg/L)	Quarterly	1	10/04/2026	<0.001	<0.001	<0.001				
Apr-26	Chromium (trivalent)	(mg/L)	Quarterly	1	10/04/2026	<0.005	<0.005	<0.005				

Apr-26	Cobalt (dissolved)	(mg/L)	Quarterly	1	10/04/2026	0.048	0.048	0.048					
Apr-26	Copper (dissolved)	(mg/L)	Quarterly	1	10/04/2026	<0.001	<0.001	<0.001					
Apr-26	Dissolved organic carbon	(mg/L)	6-monthly		10/04/2026								
Apr-26	Electrical conductivity	(us/cm)	Quarterly	1	10/04/2026	12994	12994	12994					
Apr-26	Fluoride	(mg/L)	6-monthly		10/04/2026								
Apr-26	Hardness (as calcium carbonate)	(mg/L)	6-monthly		10/04/2026								
Apr-26	Iron (dissolved)	(mg/L)	6-monthly		10/04/2026								
Apr-26	Lead (dissolved)	(mg/L)	Quarterly	1	10/04/2026	<0.001	<0.001	<0.001					
Apr-26	Magnesium (dissolved)	(mg/L)	6-monthly		10/04/2026								
Apr-26	Manganese (dissolved)	(mg/L)	Quarterly	1	10/04/2026	4.1	4.1	4.1					
Apr-26	Mercury (dissolved)	(mg/L)	Quarterly	1	10/04/2026	<0.00005	<0.00005	<0.00005					
Apr-26	Molybdenum (dissolved)	(mg/L)	6-monthly		10/04/2026								
Apr-26	Nickel (dissolved)	(mg/L)	6-monthly		10/04/2026								
Apr-26	Nitrate	(mg/L)	Quarterly	1	10/04/2026	0.02	0.02	0.02					
Apr-26	Nitrogen (total)	(mg/L)	Quarterly	1	10/04/2026	1.5	1.5	1.5					
Apr-26	Oxides of nitrogen	(mg/L)	6-monthly		10/04/2026								
Apr-26	pH	(pH)	Quarterly	1	10/04/2026	5.25	5.25	5.25					
Apr-26	Potassium	(mg/L)	6-monthly		10/04/2026								
Apr-26	Reactive phosphorus	(mg/L)	6-monthly		10/04/2026								
Apr-26	Selenium (dissolved)	(mg/L)	6-monthly		10/04/2026								
Apr-26	Silver (dissolved)	(mg/L)	Quarterly	1	10/04/2026	<0.001	<0.001	<0.001					
Apr-26	Sodium	(mg/L)	6-monthly		10/04/2026								
Apr-26	Standing water level	(m)	Quarterly	1	10/04/2026	1.58	1.58	1.58					
Apr-26	Sulfate	(mg/L)	6-monthly		10/04/2026								
Apr-26	Total dissolved solids	(mg/L)	6-monthly		10/04/2026								
Apr-26	Total phosphorus	(mg/L)	Quarterly	1	10/04/2026	<0.05	<0.05	<0.05					
Apr-26	Vanadium (dissolved)	(mg/L)	6-monthly		10/04/2026								
Apr-26	Zinc (dissolved)	(mg/L)	Quarterly	1	10/04/2026	0.051	0.051	0.051					

POINT 32 Groundwater quality monitoring bore marked and shown as EPA ID 32 on The Plans "VX837351_1_08" AND "VX837351_2_03", AND PROVIDED TO THE EPA ON 23/02/2026 (EPA REFERENCE DOC26/118983).												
Month	Pollutant	Unit of Measure	Sample/Measurement Frequency	Samples Collected & Analysed	Date Sampled	Lowest Sample Value	Mean of Samples	Highest Sample Value	99 Percentile Concentration Limit	100 Percentile Concentration Limit	Exceedance (yes/no)	Comments
Apr-26	Aluminium (dissolved)	(mg/L)	Quarterly	1	10/04/2026	0.24	0.24	0.24				
Apr-26	Ammonia	(mg/L)	Quarterly	1	10/04/2026	0.065	0.065	0.065				
Apr-26	Antimony (dissolved)	(mg/L)	6-monthly		10/04/2026							
Apr-26	Arsenic (III)	(mg/L)	Quarterly	1	10/04/2026	<0.001	<0.001	<0.001				
Apr-26	Arsenic (V)	(mg/L)	Quarterly	1	10/04/2026	<0.001	<0.001	<0.001				
Apr-26	Arsenic (dissolved)	(mg/L)	Quarterly	1	10/04/2026	<0.001	<0.001	<0.001				
Apr-26	Barium (dissolved)	(mg/L)	6-monthly		10/04/2026							
Apr-26	Beryllium (dissolved)	(mg/L)	6-monthly		10/04/2026							
Apr-26	Boron (dissolved)	(mg/L)	Quarterly	1	10/04/2026	0.09	0.09	0.09				
Apr-26	Cadmium (dissolved)	(mg/L)	Quarterly	1	10/04/2026	<0.0001	<0.0001	<0.0001				
Apr-26	Calcium (dissolved)	(mg/L)	6-monthly		10/04/2026							
Apr-26	Chloride	(mg/L)	6-monthly		10/04/2026							
Apr-26	Chromium (hexavalent)	(mg/L)	Quarterly	1	10/04/2026	<0.005	<0.005	<0.005				
Apr-26	Chromium (dissolved)	(mg/L)	Quarterly	1	10/04/2026	0.001	0.001	0.001				
Apr-26	Chromium (trivalent)	(mg/L)	Quarterly	1	10/04/2026	<0.005	<0.005	<0.005				
Apr-26	Cobalt (dissolved)	(mg/L)	Quarterly	1	10/04/2026	0.002	0.002	0.002				
Apr-26	Copper (dissolved)	(mg/L)	Quarterly	1	10/04/2026	<0.001	<0.001	<0.001				
Apr-26	Dissolved organic carbon	(mg/L)	6-monthly		10/04/2026							
Apr-26	Electrical conductivity	(us/cm)	Quarterly	1	10/04/2026	316.3	316.3	316.3				
Apr-26	Fluoride	(mg/L)	6-monthly		10/04/2026							
Apr-26	Hardness (as calcium carbonate)	(mg/L)	6-monthly		10/04/2026							
Apr-26	Iron (dissolved)	(mg/L)	6-monthly		10/04/2026							
Apr-26	Lead (dissolved)	(mg/L)	Quarterly	1	10/04/2026	<0.001	<0.001	<0.001				
Apr-26	Magnesium (dissolved)	(mg/L)	6-monthly		10/04/2026							
Apr-26	Manganese (dissolved)	(mg/L)	Quarterly	1	10/04/2026	0.06	0.06	0.06				
Apr-26	Mercury (dissolved)	(mg/L)	Quarterly	1	10/04/2026	<0.00005	<0.00005	<0.00005				
Apr-26	Molybdenum (dissolved)	(mg/L)	6-monthly		10/04/2026							
Apr-26	Nickel (dissolved)	(mg/L)	6-monthly		10/04/2026							
Apr-26	Nitrate	(mg/L)	Quarterly	1	10/04/2026	0.02	0.02	0.02				
Apr-26	Nitrogen (total)	(mg/L)	Quarterly	1	10/04/2026	0.5	0.5	0.5				
Apr-26	Oxides of nitrogen	(mg/L)	6-monthly		10/04/2026							
Apr-26	pH	(pH)	Quarterly	1	10/04/2026	6.0	6.0	6.0				
Apr-26	Potassium	(mg/L)	6-monthly		10/04/2026							
Apr-26	Reactive phosphorus	(mg/L)	6-monthly		10/04/2026							
Apr-26	Selenium (dissolved)	(mg/L)	6-monthly		10/04/2026							
Apr-26	Silver (dissolved)	(mg/L)	Quarterly	1	10/04/2026	<0.001	<0.001	<0.001				
Apr-26	Sodium	(mg/L)	6-monthly		10/04/2026							
Apr-26	Standing water level	(m)	Quarterly	1	10/04/2026	3.75	3.75	3.75				
Apr-26	Sulfate	(mg/L)	6-monthly		10/04/2026							
Apr-26	Total dissolved solids	(mg/L)	6-monthly		10/04/2026							
Apr-26	Total phosphorus	(mg/L)	Quarterly	1	10/04/2026	<0.05	<0.05	<0.05				
Apr-26	Vanadium (dissolved)	(mg/L)	6-monthly		10/04/2026							
Apr-26	Zinc (dissolved)	(mg/L)	Quarterly	1	10/04/2026	0.007	0.007	0.007				

**POINT 33** Groundwater quality monitoring bore marked and shown as EPA ID 33 on The Plans "VX837351\_1\_08" AND "VX837351\_2\_03", AND PROVIDED TO THE EPA ON 23/02/2026 (EPA REFERENCE DOC26/118983).

Month	Pollutant	Unit of Measure	Sample/Measurement Frequency	Samples Collected & Analysed	Date Sampled	Lowest Sample Value	Mean of Samples	Highest Sample Value	99 Percentile Concentration Limit	100 Percentile Concentration Limit	Exceedance (yes/no)	Comments
Apr-26	Aluminium (dissolved)	(mg/L)	Quarterly	1	10/04/2026	0.07	0.07	0.07				
Apr-26	Ammonia	(mg/L)	Quarterly	1	10/04/2026	0.1	0.1	0.1				
Apr-26	Antimony (dissolved)	(mg/L)	6-monthly		10/04/2026							
Apr-26	Arsenic (III)	(mg/L)	Quarterly	1	10/04/2026	<0.001	<0.001	<0.001				
Apr-26	Arsenic (V)	(mg/L)	Quarterly	1	10/04/2026	<0.001	<0.001	<0.001				
Apr-26	Arsenic (dissolved)	(mg/L)	Quarterly	1	10/04/2026	<0.001	<0.001	<0.001				
Apr-26	Barium (dissolved)	(mg/L)	6-monthly		10/04/2026							
Apr-26	Beryllium (dissolved)	(mg/L)	6-monthly		10/04/2026							
Apr-26	Boron (dissolved)	(mg/L)	Quarterly	1	10/04/2026	3.6	3.6	3.6				
Apr-26	Cadmium (dissolved)	(mg/L)	Quarterly	1	10/04/2026	<0.0001	<0.0001	<0.0001				
Apr-26	Calcium (dissolved)	(mg/L)	6-monthly		10/04/2026							
Apr-26	Chloride	(mg/L)	6-monthly		10/04/2026							
Apr-26	Chromium (hexavalent)	(mg/L)	Quarterly	1	10/04/2026	<0.005	<0.005	<0.005				
Apr-26	Chromium (dissolved)	(mg/L)	Quarterly	1	10/04/2026	0.002	0.002	0.002				
Apr-26	Chromium (trivalent)	(mg/L)	Quarterly	1	10/04/2026	<0.005	<0.005	<0.005				
Apr-26	Cobalt (dissolved)	(mg/L)	Quarterly	1	10/04/2026	<0.001	<0.001	<0.001				
Apr-26	Copper (dissolved)	(mg/L)	Quarterly	1	10/04/2026	<0.001	<0.001	<0.001				
Apr-26	Dissolved organic carbon	(mg/L)	6-monthly		10/04/2026							
Apr-26	Electrical conductivity	(us/cm)	Quarterly	1	10/04/2026	50628	50628	50628				
Apr-26	Fluoride	(mg/L)	6-monthly		10/04/2026							
Apr-26	Hardness (as calcium carbonate)	(mg/L)	6-monthly		10/04/2026							
Apr-26	Iron (dissolved)	(mg/L)	6-monthly		10/04/2026							
Apr-26	Lead (dissolved)	(mg/L)	Quarterly	1	10/04/2026	<0.001	<0.001	<0.001				
Apr-26	Magnesium (dissolved)	(mg/L)	6-monthly		10/04/2026							
Apr-26	Manganese (dissolved)	(mg/L)	Quarterly	1	10/04/2026	0.45	0.45	0.45				
Apr-26	Mercury (dissolved)	(mg/L)	Quarterly	1	10/04/2026	<0.00005	<0.00005	<0.00005				
Apr-26	Molybdenum (dissolved)	(mg/L)	6-monthly		10/04/2026							
Apr-26	Nickel (dissolved)	(mg/L)	6-monthly		10/04/2026							
Apr-26	Nitrate	(mg/L)	Quarterly	1	10/04/2026	0.01	0.01	0.01				
Apr-26	Nitrogen (total)	(mg/L)	Quarterly	1	10/04/2026	3.6	3.6	3.6				
Apr-26	Oxides of nitrogen	(mg/L)	6-monthly		10/04/2026							
Apr-26	pH	(pH)	Quarterly	1	10/04/2026	6.86	6.86	6.86				
Apr-26	Potassium	(mg/L)	6-monthly		10/04/2026							
Apr-26	Reactive phosphorus	(mg/L)	6-monthly		10/04/2026							
Apr-26	Selenium (dissolved)	(mg/L)	6-monthly		10/04/2026							
Apr-26	Silver (dissolved)	(mg/L)	Quarterly	1	10/04/2026	<0.001	<0.001	<0.001				
Apr-26	Sodium	(mg/L)	6-monthly		10/04/2026							
Apr-26	Standing water level	(m)	Quarterly	1	10/04/2026	0.45	0.45	0.45				
Apr-26	Sulfate	(mg/L)	6-monthly		10/04/2026							
Apr-26	Total dissolved solids	(mg/L)	6-monthly		10/04/2026							
Apr-26	Total phosphorus	(mg/L)	Quarterly	1	10/04/2026	0.1	0.1	0.1				
Apr-26	Vanadium (dissolved)	(mg/L)	6-monthly		10/04/2026							
Apr-26	Zinc (dissolved)	(mg/L)	Quarterly	1	10/04/2026	0.024	0.024	0.024				

**POINT 34** Groundwater quality monitoring bore marked and shown as EPA ID 34 on The Plans "VX837351\_1\_08" AND "VX837351\_2\_03", AND PROVIDED TO THE EPA ON 23/02/2026 (EPA REFERENCE DOC26/118983).

Month	Pollutant	Unit of Measure	Sample/Measurement Frequency	Samples Collected & Analysed	Date Sampled	Lowest Sample Value	Mean of Samples	Highest Sample Value	99 Percentile Concentration Limit	100 Percentile Concentration Limit	Exceedance (yes/no)	Comments
Apr-26	Aluminium (dissolved)	(mg/L)	Quarterly	1	10/04/2026	0.02	0.02	0.02				
Apr-26	Ammonia	(mg/L)	Quarterly	1	10/04/2026	0.03	0.03	0.03				
Apr-26	Antimony (dissolved)	(mg/L)	6-monthly		10/04/2026							
Apr-26	Arsenic (III)	(mg/L)	Quarterly	1	10/04/2026	<0.001	<0.001	<0.001				
Apr-26	Arsenic (V)	(mg/L)	Quarterly	1	10/04/2026	<0.001	<0.001	<0.001				
Apr-26	Arsenic (dissolved)	(mg/L)	Quarterly	1	10/04/2026	<0.001	<0.001	<0.001				
Apr-26	Barium (dissolved)	(mg/L)	6-monthly		10/04/2026							
Apr-26	Beryllium (dissolved)	(mg/L)	6-monthly		10/04/2026							
Apr-26	Boron (dissolved)	(mg/L)	Quarterly	1	10/04/2026	0.1	0.1	0.1				
Apr-26	Cadmium (dissolved)	(mg/L)	Quarterly	1	10/04/2026	<0.0001	<0.0001	<0.0001				
Apr-26	Calcium (dissolved)	(mg/L)	6-monthly		10/04/2026							
Apr-26	Chloride	(mg/L)	6-monthly		10/04/2026							
Apr-26	Chromium (hexavalent)	(mg/L)	Quarterly	1	10/04/2026	<0.005	<0.005	<0.005				
Apr-26	Chromium (dissolved)	(mg/L)	Quarterly	1	10/04/2026	<0.001	<0.001	<0.001				
Apr-26	Chromium (trivalent)	(mg/L)	Quarterly	1	10/04/2026	<0.005	<0.005	<0.005				
Apr-26	Cobalt (dissolved)	(mg/L)	Quarterly	1	10/04/2026	0.001	0.001	0.001				
Apr-26	Copper (dissolved)	(mg/L)	Quarterly	1	10/04/2026	<0.001	<0.001	<0.001				
Apr-26	Dissolved organic carbon	(mg/L)	6-monthly		10/04/2026							
Apr-26	Electrical conductivity	(us/cm)	Quarterly	1	10/04/2026	1244	1244	1244				
Apr-26	Fluoride	(mg/L)	6-monthly		10/04/2026							
Apr-26	Hardness (as calcium carbonate)	(mg/L)	6-monthly		10/04/2026							
Apr-26	Iron (dissolved)	(mg/L)	6-monthly		10/04/2026							
Apr-26	Lead (dissolved)	(mg/L)	Quarterly	1	10/04/2026	<0.001	<0.001	<0.001				

Apr-26	Magnesium (dissolved)	(mg/L)	6-monthly		10/04/2026							
Apr-26	Manganese (dissolved)	(mg/L)	Quarterly	1	10/04/2026	0.053	0.053	0.053				
Apr-26	Mercury (dissolved)	(mg/L)	Quarterly	1	10/04/2026	<0.00005	<0.00005	<0.00005				
Apr-26	Molybdenum (dissolved)	(mg/L)	6-monthly		10/04/2026							
Apr-26	Nickel (dissolved)	(mg/L)	6-monthly		10/04/2026							
Apr-26	Nitrate	(mg/L)	Quarterly	1	10/04/2026	0.02	0.02	0.02				
Apr-26	Nitrogen (total)	(mg/L)	Quarterly	1	10/04/2026	<0.1	<0.1	<0.1				
Apr-26	Oxides of nitrogen	(mg/L)	6-monthly		10/04/2026							
Apr-26	pH	(pH)	Quarterly	1	10/04/2026	5.45	5.45	5.45				
Apr-26	Potassium	(mg/L)	6-monthly		10/04/2026							
Apr-26	Reactive phosphorus	(mg/L)	6-monthly		10/04/2026							
Apr-26	Selenium (dissolved)	(mg/L)	6-monthly		10/04/2026							
Apr-26	Silver (dissolved)	(mg/L)	Quarterly	1	10/04/2026	<0.001	<0.001	<0.001				
Apr-26	Sodium	(mg/L)	6-monthly		10/04/2026							
Apr-26	Standing water level	(m)	Quarterly	1	10/04/2026	0.2	0.2	0.2				
Apr-26	Sulfate	(mg/L)	6-monthly		10/04/2026							
Apr-26	Total dissolved solids	(mg/L)	6-monthly		10/04/2026							
Apr-26	Total phosphorus	(mg/L)	Quarterly	1	10/04/2026	<0.05	<0.05	<0.05				
Apr-26	Vanadium (dissolved)	(mg/L)	6-monthly		10/04/2026							
Apr-26	Zinc (dissolved)	(mg/L)	Quarterly	1	10/04/2026	0.023	0.023	0.023				

**POINT 36** Groundwater quality monitoring bore marked and shown as VO-MW07 on The Plans "VX837351\_1\_08" AND "VX837351\_2\_03", AND PROVIDED TO THE EPA ON 23/02/2026 (EPA REFERENCE DOC26/118983).

Month	Pollutant	Unit of Measure	Sample/Masurement Frequency	Samples Collected & Analysed	Date Sampled	Lowest Sample Value	Mean of Samples	Highest Sample Value	99 Percentile Concentration Limit	100 Percentile Concentration Limit	Exceedance (yes/no)	Comments
Apr-26	Aluminium (dissolved)	(mg/L)	Quarterly	1	10/04/2026	0.02	0.02	0.02				
Apr-26	Ammonia	(mg/L)	Quarterly	1	10/04/2026	0.089	0.089	0.089				
Apr-26	Antimony (dissolved)	(mg/L)	6-monthly		10/04/2026							
Apr-26	Arsenic (III)	(mg/L)	Quarterly	1	10/04/2026	<0.001	<0.001	<0.001				
Apr-26	Arsenic (V)	(mg/L)	Quarterly	1	10/04/2026	<0.001	<0.001	<0.001				
Apr-26	Arsenic (dissolved)	(mg/L)	Quarterly	1	10/04/2026	<0.001	<0.001	<0.001				
Apr-26	Barium (dissolved)	(mg/L)	6-monthly		10/04/2026							
Apr-26	Beryllium (dissolved)	(mg/L)	6-monthly		10/04/2026							
Apr-26	Boron (dissolved)	(mg/L)	Quarterly	1	10/04/2026	0.06	0.06	0.06				
Apr-26	Cadmium (dissolved)	(mg/L)	Quarterly	1	10/04/2026	<0.0001	<0.0001	<0.0001				
Apr-26	Calcium (dissolved)	(mg/L)	6-monthly		10/04/2026							
Apr-26	Chloride	(mg/L)	6-monthly		10/04/2026							
Apr-26	Chromium (hexavalent)	(mg/L)	Quarterly	1	10/04/2026	<0.005	<0.005	<0.005				
Apr-26	Chromium (dissolved)	(mg/L)	Quarterly	1	10/04/2026	<0.001	<0.001	<0.001				
Apr-26	Chromium (trivalent)	(mg/L)	Quarterly	1	10/04/2026	<0.005	<0.005	<0.005				
Apr-26	Cobalt (dissolved)	(mg/L)	Quarterly	1	10/04/2026	<0.001	<0.001	<0.001				
Apr-26	Copper (dissolved)	(mg/L)	Quarterly	1	10/04/2026	<0.001	<0.001	<0.001				
Apr-26	Dissolved organic carbon	(mg/L)	6-monthly		10/04/2026							
Apr-26	Electrical conductivity	(us/cm)	Quarterly	1	10/04/2026	87	87	87				
Apr-26	Fluoride	(mg/L)	6-monthly		10/04/2026							
Apr-26	Hardness (as calcium carbonate)	(mg/L)	6-monthly		10/04/2026							
Apr-26	Iron (dissolved)	(mg/L)	6-monthly		10/04/2026							
Apr-26	Lead (dissolved)	(mg/L)	Quarterly	1	10/04/2026	<0.001	<0.001	<0.001				
Apr-26	Magnesium (dissolved)	(mg/L)	6-monthly		10/04/2026							
Apr-26	Manganese (dissolved)	(mg/L)	Quarterly	1	10/04/2026	<0.005	<0.005	<0.005				
Apr-26	Mercury (dissolved)	(mg/L)	Quarterly	1	10/04/2026	<0.00005	<0.00005	<0.00005				
Apr-26	Molybdenum (dissolved)	(mg/L)	6-monthly		10/04/2026							
Apr-26	Nickel (dissolved)	(mg/L)	6-monthly		10/04/2026							
Apr-26	Nitrate	(mg/L)	Quarterly	1	10/04/2026	0.15	0.15	0.15				
Apr-26	Nitrogen (total)	(mg/L)	Quarterly	1	10/04/2026	0.2	0.2	0.2				
Apr-26	Oxides of nitrogen	(mg/L)	6-monthly		10/04/2026							
Apr-26	pH	(pH)	Quarterly	1	10/04/2026	4.91	4.91	4.91				
Apr-26	Potassium	(mg/L)	6-monthly		10/04/2026							
Apr-26	Reactive phosphorus	(mg/L)	6-monthly		10/04/2026							
Apr-26	Selenium (dissolved)	(mg/L)	6-monthly		10/04/2026							
Apr-26	Silver (dissolved)	(mg/L)	Quarterly	1	10/04/2026	<0.001	<0.001	<0.001				
Apr-26	Sodium	(mg/L)	6-monthly		10/04/2026							
Apr-26	Standing water level	(m)	Quarterly	1	10/04/2026	3.46	3.46	3.46				
Apr-26	Sulfate	(mg/L)	6-monthly		10/04/2026							
Apr-26	Total dissolved solids	(mg/L)	6-monthly		10/04/2026							
Apr-26	Total phosphorus	(mg/L)	Quarterly	1	10/04/2026	<0.05	<0.05	<0.05				
Apr-26	Vanadium (dissolved)	(mg/L)	6-monthly		10/04/2026							
Apr-26	Zinc (dissolved)	(mg/L)	Quarterly	1	10/04/2026	0.014	0.014	0.014				

**POINT 37** Groundwater quality monitoring bore marked and shown as VO-MW08 on The Plans "VX837351\_1\_08" AND "VX837351\_2\_03", AND PROVIDED TO THE EPA ON 23/02/2026 (EPA REFERENCE DOC26/118983).

Month	Pollutant	Unit of Measure	Sample/Masurement Frequency	Samples Collected & Analysed	Date Sampled	Lowest Sample Value	Mean of Samples	Highest Sample Value	99 Percentile Concentration Limit	100 Percentile Concentration Limit	Exceedance (yes/no)	Comments
Apr-26	Aluminium (dissolved)	(mg/L)	Quarterly	1	10/04/2026	<0.01	<0.01	<0.01				
Apr-26	Ammonia	(mg/L)	Quarterly	1	10/04/2026	0.02	0.02	0.02				
Apr-26	Antimony (dissolved)	(mg/L)	6-monthly		10/04/2026							

Apr-26	Arsenic (III)	(mg/L)	Quarterly	1	10/04/2026	<0.001	<0.001	<0.001				
Apr-26	Arsenic (V)	(mg/L)	Quarterly	1	10/04/2026	<0.001	<0.001	<0.001				
Apr-26	Arsenic (dissolved)	(mg/L)	Quarterly	1	10/04/2026	<0.001	<0.001	<0.001				
Apr-26	Barium (dissolved)	(mg/L)	6-monthly		10/04/2026							
Apr-26	Beryllium (dissolved)	(mg/L)	6-monthly		10/04/2026							
Apr-26	Boron (dissolved)	(mg/L)	Quarterly	1	10/04/2026	0.21	0.21	0.21				
Apr-26	Cadmium (dissolved)	(mg/L)	Quarterly	1	10/04/2026	<0.0001	<0.0001	<0.0001				
Apr-26	Calcium (dissolved)	(mg/L)	6-monthly		10/04/2026							
Apr-26	Chloride	(mg/L)	6-monthly		10/04/2026							
Apr-26	Chromium (hexavalent)	(mg/L)	Quarterly	1	10/04/2026	<0.005	<0.005	<0.005				
Apr-26	Chromium (dissolved)	(mg/L)	Quarterly	1	10/04/2026	<0.001	<0.001	<0.001				
Apr-26	Chromium (trivalent)	(mg/L)	Quarterly	1	10/04/2026	<0.005	<0.005	<0.005				
Apr-26	Cobalt (dissolved)	(mg/L)	Quarterly	1	10/04/2026	0.002	0.002	0.002				
Apr-26	Copper (dissolved)	(mg/L)	Quarterly	1	10/04/2026	<0.001	<0.001	<0.001				
Apr-26	Dissolved organic carbon	(mg/L)	6-monthly		10/04/2026							
Apr-26	Electrical conductivity	(us/cm)	Quarterly	1	10/04/2026	2764	2764	2764				
Apr-26	Fluoride	(mg/L)	6-monthly		10/04/2026							
Apr-26	Hardness (as calcium carbonate)	(mg/L)	6-monthly		10/04/2026							
Apr-26	Iron (dissolved)	(mg/L)	6-monthly		10/04/2026							
Apr-26	Lead (dissolved)	(mg/L)	Quarterly	1	10/04/2026	<0.001	<0.001	<0.001				
Apr-26	Magnesium (dissolved)	(mg/L)	6-monthly		10/04/2026							
Apr-26	Manganese (dissolved)	(mg/L)	Quarterly	1	10/04/2026	0.48	0.48	0.48				
Apr-26	Mercury (dissolved)	(mg/L)	Quarterly	1	10/04/2026	<0.00005	<0.00005	<0.00005				
Apr-26	Molybdenum (dissolved)	(mg/L)	6-monthly		10/04/2026							
Apr-26	Nickel (dissolved)	(mg/L)	6-monthly		10/04/2026							
Apr-26	Nitrate	(mg/L)	Quarterly	1	10/04/2026	0.053	0.053	0.053				
Apr-26	Nitrogen (total)	(mg/L)	Quarterly	1	10/04/2026	0.1	0.1	0.1				
Apr-26	Oxides of nitrogen	(mg/L)	6-monthly		10/04/2026							
Apr-26	pH	(pH)	Quarterly	1	10/04/2026	6.7	6.7	6.7				
Apr-26	Potassium	(mg/L)	6-monthly		10/04/2026							
Apr-26	Reactive phosphorus	(mg/L)	6-monthly		10/04/2026							
Apr-26	Selenium (dissolved)	(mg/L)	6-monthly		10/04/2026							
Apr-26	Silver (dissolved)	(mg/L)	Quarterly	1	10/04/2026	<0.001	<0.001	<0.001				
Apr-26	Sodium	(mg/L)	6-monthly		10/04/2026							
Apr-26	Standing water level	(m)	Quarterly	1	10/04/2026	8.5	8.5	8.5				
Apr-26	Sulfate	(mg/L)	6-monthly		10/04/2026							
Apr-26	Total dissolved solids	(mg/L)	6-monthly		10/04/2026							
Apr-26	Total phosphorus	(mg/L)	Quarterly	1	10/04/2026	<0.05	<0.05	<0.05				
Apr-26	Vanadium (dissolved)	(mg/L)	6-monthly		10/04/2026							
Apr-26	Zinc (dissolved)	(mg/L)	Quarterly	1	10/04/2026	0.017	0.017	0.017				

**POINT 38** Groundwater quality monitoring bore marked and shown as VO-MW11 on The Plans "VX837351\_1\_08" AND "VX837351\_2\_03", AND PROVIDED TO THE EPA ON 23/02/2026 (EPA REFERENCE DOC26/118983).

Month	Pollutant	Unit of Measure	Sample/Measurement Frequency	Samples Collected & Analysed	Date Sampled	Lowest Sample Value	Mean of Samples	Highest Sample Value	99 Percentile Concentration Limit	100 Percentile Concentration Limit	Exceedance (yes/no)	Comments
Apr-26	Aluminium (dissolved)	(mg/L)	Quarterly	1	10/04/2026	0.06	0.06	0.06				
Apr-26	Ammonia	(mg/L)	Quarterly	1	10/04/2026	0.02	0.02	0.02				
Apr-26	Antimony (dissolved)	(mg/L)	6-monthly		10/04/2026							
Apr-26	Arsenic (III)	(mg/L)	Quarterly	1	10/04/2026	<0.001	<0.001	<0.001				
Apr-26	Arsenic (V)	(mg/L)	Quarterly	1	10/04/2026	<0.001	<0.001	<0.001				
Apr-26	Arsenic (dissolved)	(mg/L)	Quarterly	1	10/04/2026	<0.001	<0.001	<0.001				
Apr-26	Barium (dissolved)	(mg/L)	6-monthly		10/04/2026							
Apr-26	Beryllium (dissolved)	(mg/L)	6-monthly		10/04/2026							
Apr-26	Boron (dissolved)	(mg/L)	Quarterly	1	10/04/2026	0.05	0.05	0.05				
Apr-26	Cadmium (dissolved)	(mg/L)	Quarterly	1	10/04/2026	<0.0001	<0.0001	<0.0001				
Apr-26	Calcium (dissolved)	(mg/L)	6-monthly		10/04/2026							
Apr-26	Chloride	(mg/L)	6-monthly		10/04/2026							
Apr-26	Chromium (hexavalent)	(mg/L)	Quarterly	1	10/04/2026	<0.005	<0.005	<0.005				
Apr-26	Chromium (dissolved)	(mg/L)	Quarterly	1	10/04/2026	<0.001	<0.001	<0.001				
Apr-26	Chromium (trivalent)	(mg/L)	Quarterly	1	10/04/2026	<0.005	<0.005	<0.005				
Apr-26	Cobalt (dissolved)	(mg/L)	Quarterly	1	10/04/2026	0.002	0.002	0.002				
Apr-26	Copper (dissolved)	(mg/L)	Quarterly	1	10/04/2026	0.002	0.002	0.002				
Apr-26	Dissolved organic carbon	(mg/L)	6-monthly		10/04/2026							
Apr-26	Electrical conductivity	(us/cm)	Quarterly	1	10/04/2026	2987	2987	2987				
Apr-26	Fluoride	(mg/L)	6-monthly		10/04/2026							
Apr-26	Hardness (as calcium carbonate)	(mg/L)	6-monthly		10/04/2026							
Apr-26	Iron (dissolved)	(mg/L)	6-monthly		10/04/2026							
Apr-26	Lead (dissolved)	(mg/L)	Quarterly	1	10/04/2026	0.003	0.003	0.003				
Apr-26	Magnesium (dissolved)	(mg/L)	6-monthly		10/04/2026							
Apr-26	Manganese (dissolved)	(mg/L)	Quarterly	1	10/04/2026	0.026	0.026	0.026				
Apr-26	Mercury (dissolved)	(mg/L)	Quarterly	1	10/04/2026	<0.00005	<0.00005	<0.00005				
Apr-26	Molybdenum (dissolved)	(mg/L)	6-monthly		10/04/2026							
Apr-26	Nickel (dissolved)	(mg/L)	6-monthly		10/04/2026							
Apr-26	Nitrate	(mg/L)	Quarterly	1	10/04/2026	0.053	0.053	0.053				
Apr-26	Nitrogen (total)	(mg/L)	Quarterly	1	10/04/2026	0.1	0.1	0.1				
Apr-26	Oxides of nitrogen	(mg/L)	6-monthly		10/04/2026							

Apr-26	pH	(pH)	Quarterly	1	10/04/2026	4.49	4.49	4.49				
Apr-26	Potassium	(mg/L)	6-monthly		10/04/2026							
Apr-26	Reactive phosphorus	(mg/L)	6-monthly		10/04/2026							
Apr-26	Selenium (dissolved)	(mg/L)	6-monthly		10/04/2026							
Apr-26	Silver (dissolved)	(mg/L)	Quarterly	1	10/04/2026	<0.001	<0.001	<0.001				
Apr-26	Sodium	(mg/L)	6-monthly		10/04/2026							
Apr-26	Standing water level	(m)	Quarterly	1	10/04/2026	7.43	7.43	7.43				
Apr-26	Sulfate	(mg/L)	6-monthly		10/04/2026							
Apr-26	Total dissolved solids	(mg/L)	6-monthly		10/04/2026							
Apr-26	Total phosphorus	(mg/L)	Quarterly	1	10/04/2026	<0.05	<0.05	<0.05				
Apr-26	Vanadium (dissolved)	(mg/L)	6-monthly		10/04/2026							
Apr-26	Zinc (dissolved)	(mg/L)	Quarterly	1	10/04/2026	0.022	0.022	0.022				

**POINT 39** Groundwater quality monitoring bore marked and shown as VO-MW15 on The Plans "VX837351\_1\_08" AND "VX837351\_2\_03", AND PROVIDED TO THE EPA ON 23/02/2026 (EPA REFERENCE DOC26/118983).

Month	Pollutant	Unit of Measure	Sample/Measurement Frequency	Samples Collected & Analysed	Date Sampled	Lowest Sample Value	Mean of Samples	Highest Sample Value	99 Percentile Concentration Limit	100 Percentile Concentration Limit	Exceedance (yes/no)	Comments
Apr-26	Aluminium (dissolved)	(mg/L)	Quarterly	1	10/04/2026	0.01	0.01	0.01				
Apr-26	Ammonia	(mg/L)	Quarterly	1	10/04/2026	0.03	0.03	0.03				
Apr-26	Antimony (dissolved)	(mg/L)	6-monthly		10/04/2026							
Apr-26	Arsenic (III)	(mg/L)	Quarterly	1	10/04/2026	<0.001	<0.001	<0.001				
Apr-26	Arsenic (V)	(mg/L)	Quarterly	1	10/04/2026	<0.001	<0.001	<0.001				
Apr-26	Arsenic (dissolved)	(mg/L)	Quarterly	1	10/04/2026	<0.001	<0.001	<0.001				
Apr-26	Barium (dissolved)	(mg/L)	6-monthly		10/04/2026							
Apr-26	Beryllium (dissolved)	(mg/L)	6-monthly		10/04/2026							
Apr-26	Boron (dissolved)	(mg/L)	Quarterly	1	10/04/2026	0.04	0.04	0.04				
Apr-26	Cadmium (dissolved)	(mg/L)	Quarterly	1	10/04/2026	<0.0001	<0.0001	<0.0001				
Apr-26	Calcium (dissolved)	(mg/L)	6-monthly		10/04/2026							
Apr-26	Chloride	(mg/L)	6-monthly		10/04/2026							
Apr-26	Chromium (hexavalent)	(mg/L)	Quarterly	1	10/04/2026	<0.005	<0.005	<0.005				
Apr-26	Chromium (dissolved)	(mg/L)	Quarterly	1	10/04/2026	<0.001	<0.001	<0.001				
Apr-26	Chromium (trivalent)	(mg/L)	Quarterly	1	10/04/2026	<0.005	<0.005	<0.005				
Apr-26	Cobalt (dissolved)	(mg/L)	Quarterly	1	10/04/2026	<0.001	<0.001	<0.001				
Apr-26	Copper (dissolved)	(mg/L)	Quarterly	1	10/04/2026	<0.001	<0.001	<0.001				
Apr-26	Dissolved organic carbon	(mg/L)	6-monthly		10/04/2026							
Apr-26	Electrical conductivity	(us/cm)	Quarterly	1	10/04/2026	31605	31605	31605				
Apr-26	Fluoride	(mg/L)	6-monthly		10/04/2026							
Apr-26	Hardness (as calcium carbonate)	(mg/L)	6-monthly		10/04/2026							
Apr-26	Iron (dissolved)	(mg/L)	6-monthly		10/04/2026							
Apr-26	Lead (dissolved)	(mg/L)	Quarterly	1	10/04/2026	<0.001	<0.001	<0.001				
Apr-26	Magnesium (dissolved)	(mg/L)	6-monthly		10/04/2026							
Apr-26	Manganese (dissolved)	(mg/L)	Quarterly	1	10/04/2026	0.024	0.024	0.024				
Apr-26	Mercury (dissolved)	(mg/L)	Quarterly	1	10/04/2026	<0.00005	<0.00005	<0.00005				
Apr-26	Molybdenum (dissolved)	(mg/L)	6-monthly		10/04/2026							
Apr-26	Nickel (dissolved)	(mg/L)	6-monthly		10/04/2026							
Apr-26	Nitrate	(mg/L)	Quarterly	1	10/04/2026	0.05	0.05	0.05				
Apr-26	Nitrogen (total)	(mg/L)	Quarterly	1	10/04/2026	<0.1	<0.1	<0.1				
Apr-26	Oxides of nitrogen	(mg/L)	6-monthly		10/04/2026							
Apr-26	pH	(pH)	Quarterly	1	10/04/2026	5.0	5.0	5.0				
Apr-26	Potassium	(mg/L)	6-monthly		10/04/2026							
Apr-26	Reactive phosphorus	(mg/L)	6-monthly		10/04/2026							
Apr-26	Selenium (dissolved)	(mg/L)	6-monthly		10/04/2026							
Apr-26	Silver (dissolved)	(mg/L)	Quarterly	1	10/04/2026	<0.001	<0.001	<0.001				
Apr-26	Sodium	(mg/L)	6-monthly		10/04/2026							
Apr-26	Standing water level	(m)	Quarterly	1	10/04/2026	1.5	1.5	1.5				
Apr-26	Sulfate	(mg/L)	6-monthly		10/04/2026							
Apr-26	Total dissolved solids	(mg/L)	6-monthly		10/04/2026							
Apr-26	Total phosphorus	(mg/L)	Quarterly	1	10/04/2026	<0.05	<0.05	<0.05				
Apr-26	Vanadium (dissolved)	(mg/L)	6-monthly		10/04/2026							
Apr-26	Zinc (dissolved)	(mg/L)	Quarterly	1	10/04/2026	0.02	0.02	0.02				

**POINT 40** Groundwater quality monitoring bore marked and shown as VO-MW18 on The Plans "VX837351\_1\_08" AND "VX837351\_2\_03", AND PROVIDED TO THE EPA ON 23/02/2026 (EPA REFERENCE DOC26/118983).

Month	Pollutant	Unit of Measure	Sample/Measurement Frequency	Samples Collected & Analysed	Date Sampled	Lowest Sample Value	Mean of Samples	Highest Sample Value	99 Percentile Concentration Limit	100 Percentile Concentration Limit	Exceedance (yes/no)	Comments
Apr-26	Aluminium (dissolved)	(mg/L)	Quarterly	1	10/04/2026	7.8	7.8	7.8				
Apr-26	Ammonia	(mg/L)	Quarterly	1	10/04/2026	0.44	0.44	0.44				
Apr-26	Antimony (dissolved)	(mg/L)	6-monthly		10/04/2026							
Apr-26	Arsenic (III)	(mg/L)	Quarterly	1	10/04/2026	<0.001	<0.001	<0.001				
Apr-26	Arsenic (V)	(mg/L)	Quarterly	1	10/04/2026	<0.001	<0.001	<0.001				
Apr-26	Arsenic (dissolved)	(mg/L)	Quarterly	1	10/04/2026	<0.001	<0.001	<0.001				
Apr-26	Barium (dissolved)	(mg/L)	6-monthly		10/04/2026							
Apr-26	Beryllium (dissolved)	(mg/L)	6-monthly		10/04/2026							
Apr-26	Boron (dissolved)	(mg/L)	Quarterly	1	10/04/2026	0.55	0.55	0.55				
Apr-26	Cadmium (dissolved)	(mg/L)	Quarterly	1	10/04/2026	<0.0001	<0.0001	<0.0001				
Apr-26	Calcium (dissolved)	(mg/L)	6-monthly		10/04/2026							

Apr-26	Chloride	(mg/L)	6-monthly		10/04/2026							
Apr-26	Chromium (hexavalent)	(mg/L)	Quarterly	1	10/04/2026	<0.005	<0.005	<0.005				
Apr-26	Chromium (dissolved)	(mg/L)	Quarterly	1	10/04/2026	<0.001	<0.001	<0.001				
Apr-26	Chromium (trivalent)	(mg/L)	Quarterly	1	10/04/2026	<0.005	<0.005	<0.005				
Apr-26	Cobalt (dissolved)	(mg/L)	Quarterly	1	10/04/2026	0.001	0.001	0.001				
Apr-26	Copper (dissolved)	(mg/L)	Quarterly	1	10/04/2026	0.001	0.001	0.001				
Apr-26	Dissolved organic carbon	(mg/L)	6-monthly		10/04/2026							
Apr-26	Electrical conductivity	(us/cm)	Quarterly	1	10/04/2026	4869	4869	4869				
Apr-26	Fluoride	(mg/L)	6-monthly		10/04/2026							
Apr-26	Hardness (as calcium carbonate)	(mg/L)	6-monthly		10/04/2026							
Apr-26	Iron (dissolved)	(mg/L)	6-monthly		10/04/2026							
Apr-26	Lead (dissolved)	(mg/L)	Quarterly	1	10/04/2026	0.009	0.009	0.009				
Apr-26	Magnesium (dissolved)	(mg/L)	6-monthly		10/04/2026							
Apr-26	Manganese (dissolved)	(mg/L)	Quarterly	1	10/04/2026	0.13	0.13	0.13				
Apr-26	Mercury (dissolved)	(mg/L)	Quarterly	1	10/04/2026	<0.00005	<0.00005	<0.00005				
Apr-26	Molybdenum (dissolved)	(mg/L)	6-monthly		10/04/2026							
Apr-26	Nickel (dissolved)	(mg/L)	6-monthly		10/04/2026							
Apr-26	Nitrate	(mg/L)	Quarterly	1	10/04/2026	0.054	0.054	0.054				
Apr-26	Nitrogen (total)	(mg/L)	Quarterly	1	10/04/2026	0.6	0.6	0.6				
Apr-26	Oxides of nitrogen	(mg/L)	6-monthly		10/04/2026							
Apr-26	pH	(pH)	Quarterly	1	10/04/2026	4.0	4.0	4.0				
Apr-26	Potassium	(mg/L)	6-monthly		10/04/2026							
Apr-26	Reactive phosphorus	(mg/L)	6-monthly		10/04/2026							
Apr-26	Selenium (dissolved)	(mg/L)	6-monthly		10/04/2026							
Apr-26	Silver (dissolved)	(mg/L)	Quarterly	1	10/04/2026	<0.001	<0.001	<0.001				
Apr-26	Sodium	(mg/L)	6-monthly		10/04/2026							
Apr-26	Standing water level	(m)	Quarterly	1	10/04/2026	3.93	3.93	3.93				
Apr-26	Sulfate	(mg/L)	6-monthly		10/04/2026							
Apr-26	Total dissolved solids	(mg/L)	6-monthly		10/04/2026							
Apr-26	Total phosphorus	(mg/L)	Quarterly	1	10/04/2026	<0.05	<0.05	<0.05				
Apr-26	Vanadium (dissolved)	(mg/L)	6-monthly		10/04/2026							
Apr-26	Zinc (dissolved)	(mg/L)	Quarterly	1	10/04/2026	0.024	0.024	0.024				

**POINT 41** Groundwater quality monitoring bore marked and shown as VO-MW19 on The Plans "VX837351\_1\_08" AND "VX837351\_2\_03", AND PROVIDED TO THE EPA ON 23/02/2026 (EPA REFERENCE DOC26/118983).

Month	Pollutant	Unit of Measure	Sample/Measurement Frequency	Samples Collected & Analysed	Date Sampled	Lowest Sample Value	Mean of Samples	Highest Sample Value	99 Percentile Concentration Limit	100 Percentile Concentration Limit	Exceedance (yes/no)	Comments
Apr-26	Aluminium (dissolved)	(mg/L)	Quarterly	1	10/04/2026	0.20	0.20	0.20				
Apr-26	Ammonia	(mg/L)	Quarterly	1	10/04/2026	0.03	0.03	0.03				
Apr-26	Antimony (dissolved)	(mg/L)	6-monthly		10/04/2026							
Apr-26	Arsenic (III)	(mg/L)	Quarterly	1	10/04/2026	<0.001	<0.001	<0.001				
Apr-26	Arsenic (V)	(mg/L)	Quarterly	1	10/04/2026	<0.001	<0.001	<0.001				
Apr-26	Arsenic (dissolved)	(mg/L)	Quarterly	1	10/04/2026	<0.001	<0.001	<0.001				
Apr-26	Barium (dissolved)	(mg/L)	6-monthly		10/04/2026							
Apr-26	Beryllium (dissolved)	(mg/L)	6-monthly		10/04/2026							
Apr-26	Boron (dissolved)	(mg/L)	Quarterly	1	10/04/2026	0.53	0.53	0.53				
Apr-26	Cadmium (dissolved)	(mg/L)	Quarterly	1	10/04/2026	<0.0001	<0.0001	<0.0001				
Apr-26	Calcium (dissolved)	(mg/L)	6-monthly		10/04/2026							
Apr-26	Chloride	(mg/L)	6-monthly		10/04/2026							
Apr-26	Chromium (hexavalent)	(mg/L)	Quarterly	1	10/04/2026	<0.005	<0.005	<0.005				
Apr-26	Chromium (dissolved)	(mg/L)	Quarterly	1	10/04/2026	<0.001	<0.001	<0.001				
Apr-26	Chromium (trivalent)	(mg/L)	Quarterly	1	10/04/2026	<0.005	<0.005	<0.005				
Apr-26	Cobalt (dissolved)	(mg/L)	Quarterly	1	10/04/2026	<0.001	<0.001	<0.001				
Apr-26	Copper (dissolved)	(mg/L)	Quarterly	1	10/04/2026	<0.001	<0.001	<0.001				
Apr-26	Dissolved organic carbon	(mg/L)	6-monthly		10/04/2026							
Apr-26	Electrical conductivity	(us/cm)	Quarterly	1	10/04/2026	883	883	883				
Apr-26	Fluoride	(mg/L)	6-monthly		10/04/2026							
Apr-26	Hardness (as calcium carbonate)	(mg/L)	6-monthly		10/04/2026							
Apr-26	Iron (dissolved)	(mg/L)	6-monthly		10/04/2026							
Apr-26	Lead (dissolved)	(mg/L)	Quarterly	1	10/04/2026	<0.001	<0.001	<0.001				
Apr-26	Magnesium (dissolved)	(mg/L)	6-monthly		10/04/2026							
Apr-26	Manganese (dissolved)	(mg/L)	Quarterly	1	10/04/2026	0.012	0.012	0.012				
Apr-26	Mercury (dissolved)	(mg/L)	Quarterly	1	10/04/2026	<0.00005	<0.00005	<0.00005				
Apr-26	Molybdenum (dissolved)	(mg/L)	6-monthly		10/04/2026							
Apr-26	Nickel (dissolved)	(mg/L)	6-monthly		10/04/2026							
Apr-26	Nitrate	(mg/L)	Quarterly	1	10/04/2026	0.01	0.01	0.01				
Apr-26	Nitrogen (total)	(mg/L)	Quarterly	1	10/04/2026	0.1	0.1	0.1				
Apr-26	Oxides of nitrogen	(mg/L)	6-monthly		10/04/2026							
Apr-26	pH	(pH)	Quarterly	1	10/04/2026	4.7	4.7	4.7				
Apr-26	Potassium	(mg/L)	6-monthly		10/04/2026							
Apr-26	Reactive phosphorus	(mg/L)	6-monthly		10/04/2026							
Apr-26	Selenium (dissolved)	(mg/L)	6-monthly		10/04/2026							
Apr-26	Silver (dissolved)	(mg/L)	Quarterly	1	10/04/2026	<0.001	<0.001	<0.001				
Apr-26	Sodium	(mg/L)	6-monthly		10/04/2026							
Apr-26	Standing water level	(m)	Quarterly	1	10/04/2026	4.3	4.3	4.3				
Apr-26	Sulfate	(mg/L)	6-monthly		10/04/2026							

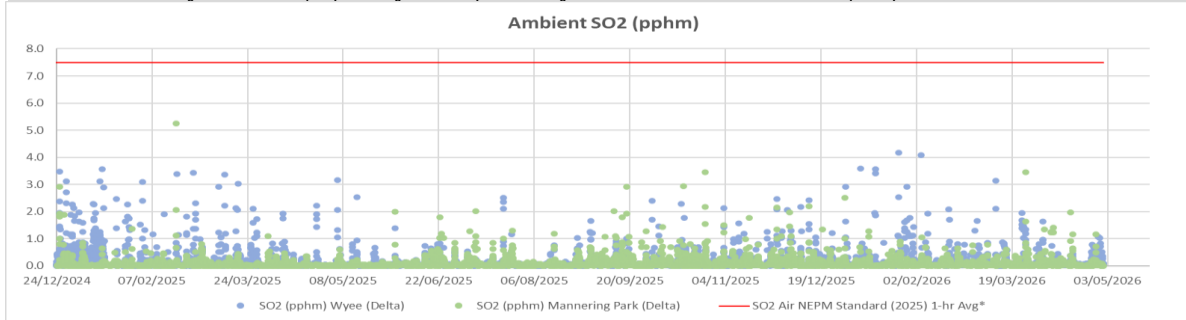
Apr-26	Total dissolved solids	(mg/L)	6-monthly		10/04/2026							
Apr-26	Total phosphorus	(mg/L)	Quarterly	1	10/04/2026	<0.05	<0.05	<0.05				
Apr-26	Vanadium (dissolved)	(mg/L)	6-monthly		10/04/2026							
Apr-26	Zinc (dissolved)	(mg/L)	Quarterly	1	10/04/2026	0.013	0.013	0.013				

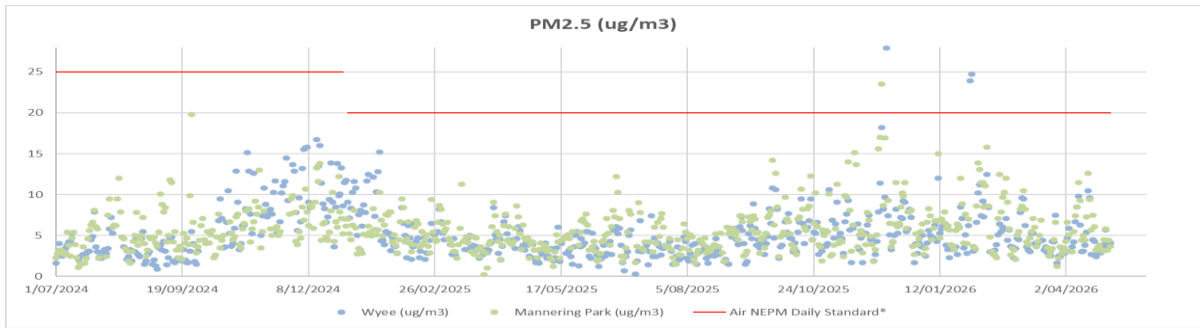
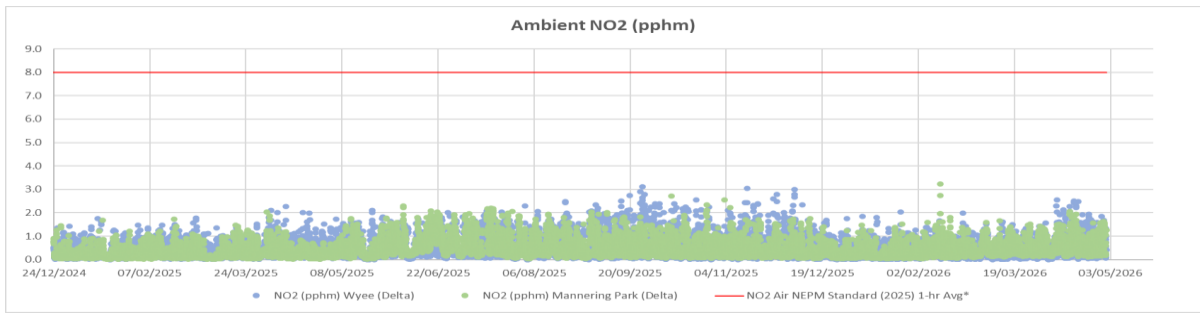
**POINT 42** Groundwater quality monitoring bore marked and shown as VU-MW17 on The Plans "VX837351\_1\_08" AND "VX837351\_2\_03", AND PROVIDED TO THE EPA ON 23/02/2026 (EPA REFERENCE DOC26/118983).

Month	Pollutant	Unit of Measure	Sample/Measurement Frequency	Samples Collected & Analysed	Date Sampled	Lowest Sample Value	Mean of Samples	Highest Sample Value	99 Percentile Concentration Limit	100 Percentile Concentration Limit	Exceedance (yes/no)	Comments
Apr-26	Aluminium (dissolved)	(mg/L)	Quarterly	1	10/04/2026	0.04	0.04	0.04				
Apr-26	Ammonia	(mg/L)	Quarterly	1	10/04/2026	0.01	0.01	0.01				
Apr-26	Antimony (dissolved)	(mg/L)	6-monthly		10/04/2026							
Apr-26	Arsenic (III)	(mg/L)	Quarterly	1	10/04/2026	<0.001	<0.001	<0.001				
Apr-26	Arsenic (V)	(mg/L)	Quarterly	1	10/04/2026	<0.001	<0.001	<0.001				
Apr-26	Arsenic (dissolved)	(mg/L)	Quarterly	1	10/04/2026	<0.001	<0.001	<0.001				
Apr-26	Barium (dissolved)	(mg/L)	6-monthly		10/04/2026							
Apr-26	Beryllium (dissolved)	(mg/L)	6-monthly		10/04/2026							
Apr-26	Boron (dissolved)	(mg/L)	Quarterly	1	10/04/2026	0.07	0.07	0.07				
Apr-26	Cadmium (dissolved)	(mg/L)	Quarterly	1	10/04/2026	<0.0001	<0.0001	<0.0001				
Apr-26	Calcium (dissolved)	(mg/L)	6-monthly		10/04/2026							
Apr-26	Chloride	(mg/L)	6-monthly		10/04/2026							
Apr-26	Chromium (hexavalent)	(mg/L)	Quarterly	1	10/04/2026	<0.005	<0.005	<0.005				
Apr-26	Chromium (dissolved)	(mg/L)	Quarterly	1	10/04/2026	<0.001	<0.001	<0.001				
Apr-26	Chromium (trivalent)	(mg/L)	Quarterly	1	10/04/2026	<0.005	<0.005	<0.005				
Apr-26	Cobalt (dissolved)	(mg/L)	Quarterly	1	10/04/2026	0.004	0.004	0.004				
Apr-26	Copper (dissolved)	(mg/L)	Quarterly	1	10/04/2026	0.002	0.002	0.002				
Apr-26	Dissolved organic carbon	(mg/L)	6-monthly		10/04/2026							
Apr-26	Electrical conductivity	(us/cm)	Quarterly	1	10/04/2026	7.5	7.5	7.5				
Apr-26	Fluoride	(mg/L)	6-monthly		10/04/2026							
Apr-26	Hardness (as calcium carbonate)	(mg/L)	6-monthly		10/04/2026							
Apr-26	Iron (dissolved)	(mg/L)	6-monthly		10/04/2026							
Apr-26	Lead (dissolved)	(mg/L)	Quarterly	1	10/04/2026	<0.001	<0.001	<0.001				
Apr-26	Magnesium (dissolved)	(mg/L)	6-monthly		10/04/2026							
Apr-26	Manganese (dissolved)	(mg/L)	Quarterly	1	10/04/2026	0.32	0.32	0.32				
Apr-26	Mercury (dissolved)	(mg/L)	Quarterly	1	10/04/2026	<0.00005	<0.00005	<0.00005				
Apr-26	Molybdenum (dissolved)	(mg/L)	6-monthly		10/04/2026							
Apr-26	Nickel (dissolved)	(mg/L)	6-monthly		10/04/2026							
Apr-26	Nitrate	(mg/L)	Quarterly	1	10/04/2026	0.04	0.04	0.04				
Apr-26	Nitrogen (total)	(mg/L)	Quarterly	1	10/04/2026	0.1	0.1	0.1				
Apr-26	Oxides of nitrogen	(mg/L)	6-monthly		10/04/2026							
Apr-26	pH	(pH)	Quarterly	1	10/04/2026	5.2	5.2	5.2				
Apr-26	Potassium	(mg/L)	6-monthly		10/04/2026							
Apr-26	Reactive phosphorus	(mg/L)	6-monthly		10/04/2026							
Apr-26	Selenium (dissolved)	(mg/L)	6-monthly		10/04/2026							
Apr-26	Silver (dissolved)	(mg/L)	Quarterly	1	10/04/2026	<0.001	<0.001	<0.001				
Apr-26	Sodium	(mg/L)	6-monthly		10/04/2026							
Apr-26	Standing water level	(m)	Quarterly	1	10/04/2026	3.26	3.26	3.26				
Apr-26	Sulfate	(mg/L)	6-monthly		10/04/2026							
Apr-26	Total dissolved solids	(mg/L)	6-monthly		10/04/2026							
Apr-26	Total phosphorus	(mg/L)	Quarterly	1	10/04/2026	0.1	0.1	0.1				
Apr-26	Vanadium (dissolved)	(mg/L)	6-monthly		10/04/2026							
Apr-26	Zinc (dissolved)	(mg/L)	Quarterly	1	10/04/2026	0.032	0.032	0.032				

### Ambient Air Quality Graphs

POINTS 16 & 35 Meteorological and ambient air quality monitoring stations at Wyee & Mannering Park marked and shown as EPA ID 16 & EPA ID 35 respectively on The Plan.





**GENERAL COMMENTS**

\*For more information about the Australian Governments National Environment Protection (Ambient Air Quality) Measure (Air NEPM) visit <<https://www.nepc.gov.au/nepms/ambient-air-quality>>.

\*\*The Air NEPM daily standard for PM2.5